

Introduction to RVP – Rigid Vinyl Plank



&



Why Rigid Vinyl Plank?

- Ease of Installation
- Locking system
- Floating Floor
- Rigid Core
- Real Wood Visuals
- Ease Of Maintenance
- Water Resistant
- Scratch, Stain, Dent and Scuff Resistant
- Life-proof/Exceptional Durability
- Pet-Proof



What is SPC?

SPC Vinyl Flooring stands for stone plastic composite vinyl flooring. Similar to [WPC vinyl](#), an SPC vinyl is an engineered luxury vinyl that combines limestone and stabilizers to create an extremely durable core. An SPC vinyl floor is still 100% waterproof, but adds stability, dent resistance and structure to vinyl plank flooring.



SPC Vinyl Construction

- **Wear Layer** – The wear layer is the top coating on the vinyl floor that is transparent. This adds scratch and stain resistance to the vinyl plank
- **Vinyl Topcoat** – Each SPC vinyl floor will have a thin layer of vinyl attached to it. This layer is waterproof and will contain the pattern, texture and look of the floor
- **SPC Core** – The SPC core is made by combining limestone powder and stabilizers to create a dimensionally stable and waterproof core
- **Attached Underlayment** – SPC vinyl floors may or may not come with attached underlayment. These are usually included to help with sound reduction and add softness to the floor



Rigid Vinyl Plank Product Collections

5mm – 20mil

- Bella Collection (6 colors)
- Galveston (5 colors)
- Hastings (4 colors)
- Malibu (5 colors)
- Saratoga (6 colors)



Rigid Vinyl Plank Product Collection

6mm – 20mil

- Heirloom Collection (7 colors)

Trim Accessories



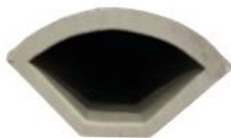
REDUCER



T-MOLD



STAIR NOSE



CORNER ROUND

Carton Quantities:
T-Mold – 20 pcs.
Reducer – 20 pcs.
Quarter Rounds – 25 pcs.
Stair Nose – 10 pcs.



Installation

1. Start by engaging the plank on the long side (angle-system).



2. Slide the plank until it reaches the short side of the next plank and drop gently.



3. Press with your thumb on both ends of the short side.



4. Continue pressing until you hear the "click" sound of the one piece Drop Lock system.



5. Hit gently with a soft-faced hammer on both sides of the short-end.



6. Planks are now fully locked.



Maintenance

- Simple Damp Mopping
- Pet-Proof vs. Real Wood
- Easy to Repair
- No Wax/No Polish



Warranty

10 yr. Light Commercial

Limited Lifetime Residential

This warranty does NOT cover the following:

- Any usage other than interior residential or interior commercial
- Labor and/or material costs involved in removing defective product and installing the replacement
- Damage due to excessive moisture, alkaline substances or hydrostatic pressure in the subfloor
- Dissatisfaction due to improper installation and maintenance
- Accidental discoloration due to extended exposure to sunlight
- Installations where temperatures are not kept between -30°F to 130°F
- Intentional misuse



Phthalates Free

What are phthalates and what are they used for?

Phthalates are a family of chemical compounds that are used in many industrial applications but primarily as an additive in nearly all types of plastic and vinyl to improve their durability, transparency and flexibility. Due to the myriad uses of plastics including but not limited to food, beverage, drug and cosmetic/personal care product containers, children's toys and construction materials, we are surrounded by sources of phthalates in our homes, cars and offices every day.

Do phthalates pose any health risks to humans?

Certain types of phthalates affect the reproductive systems of laboratory animals but more research is needed to assess the human health effects. It has been shown, however, that a number of phthalates can have harmful effects upon children if ingested. In a random sampling of the US population, the Center for Disease Control (CDC) is routinely finding as many as thirteen (13) phthalate metabolites in the urine of subjects ages six years and older. The primary sources of human exposure to phthalates are the consumption of foods and beverages packaged in plastic containers, and the usage of [over the counter \(OTC\) drugs](#) and cosmetic/personal care products packaged in plastic. It is known that when phthalates are present in packaging materials, they leach into the products which they contain. To a lesser extent, exposure can also occur when breathing air containing phthalate vapors (e.g., emitted from vinyl flooring) or particles of phthalate dust (e.g., in the vicinity of construction or demolition activities).



5mm order details

PHYSICAL CONSTRUCTION

Product Category	SPC Core Luxury Vinyl Plank
Overall Thickness	5mm
Wear Layer Thickness	20 mil (0.5 mm)
Wear Layer Appearance	Wood Grain
Finish	EIR
Size	7" x 48"
Pieces Per Carton	10
SF per Carton	23.63 sf
Carton Weight	40 lbs
Cartons Per Pallet	55
Pallet Quantity	1300 sf
Pallet Weight	2200 lbs
Container Quantities	20 Pallets/26000 sf

PHTHALATE FREE

Installation	Unilin Click System (Floating Floor)
--------------	--------------------------------------



6mm order details

PHYSICAL CONSTRUCTION

Product Category	SPC Core Luxury Vinyl Plank
Overall Thickness	6mm
Wear Layer Thickness	20 mil (0.5 mm)
Wear Layer Appearance	Wood Grain
Finish	EIR
Size	9" x 48"
Pieces Per Carton	6
SF per Carton	18 sf
Carton Weight	40 lbs
Cartons Per Pallet	56
Pallet Quantity	1008 sf
Pallet Weight	2200 lbs
Container Quantities	20 Pallets/20,160 sf



PHTHALATE FREE

Installation	Unilin Click System (Floating Floor)
--------------	--------------------------------------