

---

## Seaport

Created to imitate the materials used in 19<sup>th</sup> Century English subways these neutral colors with subtle embossment are available in 2 finishes

1. All 6 colors come in a glossy finish
2. COLOR 500-502 and 500-504 also available in matte finish
3. 3x10



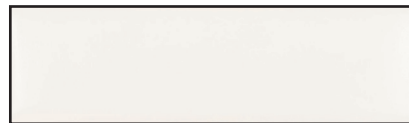
**500-501**



**500-502**



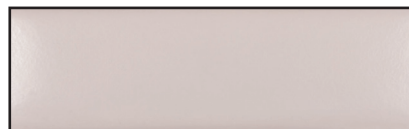
**500-503**



**500-504**



**500-505**



**500-506**

## Sizes



**3x10**

**1. FINISHES:**

**Glossy**

**Type: Ceramic Wall Tile**

**Application: Indoor**

**Thickness: 7.4 mm**

**Recommended Grout Joint: 1/8" or greater**

**2. TECHNICAL DATA**

Physical Properties	ASTM Test	ISO Test	Industry Standards	Mondani Results
Water Absorption	C373	ISO-10545/3	7.0% < wa <=20%	>10%
Breaking Strength	C648	ISO-10545/4	> 250 lbf	> 400 lbf
Scratch Hardness	MOH's Scale	EN-101	-	3
Chemical Resistance	C650	ISO-10545/13	Unaffected	Unaffected
Shade and Texture	CTDA "V"	-	-	V1
Warpage	C485	ISO-10545/2	0.0075	Pass
Wedging	C502	ISO-10545/2	1.0% Max	Pass

**3. INSTALLATION**

All installation work using Mondani Collection tiles will conform to the standards set forth in the latest version of ANSI A108/118 and/or the TCNA Handbook for Ceramic Tile installations.

Installation or setting materials:

Movement joints shall be provided throughout the tile and work will conform to ANSI Specification A108.01-3.7; A108.02 – 4.4. and TCNA Details EJ171.

Setting materials used will conform to the ANSI 118.4 standard or greater and be recommended by the selected manufacturer for the installation & setting materials for ceramic or porcelain tile based on the application requirements.



# MONDANI

COLLECTION

## Floor and Wall Solutions

Order Samples at  
331-702-2178  
[www.mondanicollection.com](http://www.mondanicollection.com)



USA  
MADE/STOCK

