

MONDANI

COLLECTION

BY: AMERICAN IMPORT TILE



Table of Contents

Concrete Look

<i>Contemporary Basalt</i>	8-10
<i>Building Blocks</i>	5-7
<i>Kanto</i>	20-22
<i>Destination</i>	29-31

Marble Looks

<i>Iconic</i>	14-16
<i>Contour</i>	17-19

Contemporary Look

<i>Carbonado Collection</i>	3-4
<i>Terrazzo Effect</i>	32-34
<i>Urban Linen</i>	11-13
<i>Modern Burlap</i>	23-25

Stone Look

<i>Foundation</i>	26-28
<i>Caprice</i>	50-52

Metal Look

<i>Forge</i>	35-37
<i>Blend</i>	47-49

Wood Look

<i>Buzz</i>	38-40
<i>Dance</i>	41-43
<i>Vivid</i>	44-46

Subway Tile

<i>Subway</i>	53-57
<i>Seaport</i>	58-60
<i>Boqueria</i>	61-64
<i>Lighthouse</i>	65-67
<i>Shore</i>	68-70
<i>Tide</i>	71-73

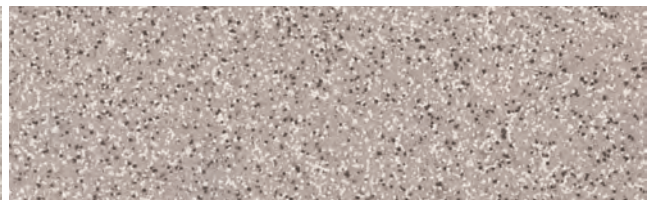
Carbonado Collection

With an anti-graffiti finish, not only is the Carbonado Collection beautiful, it is easy to clean and gives years of performance, making it the perfect fit for your dealership.

1. Created to take on the toughest areas of your facility.
2. Ideal for your service drive, service bays and new car delivery area
3. Available in 5 colors, 3 sizes and 4 finishes to meet all design and safety needs



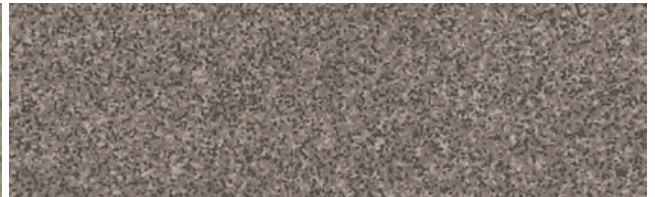
100-101



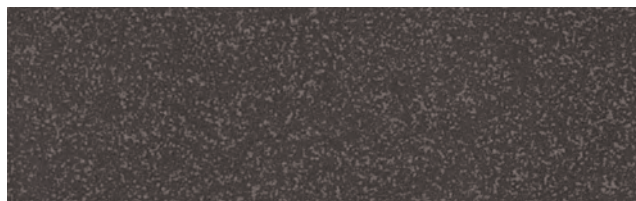
100-102



100-103



100-104



100-105

	Matte	Tread	Rustic	Polished
101-101	6"x6", 8"x8", 12"x12"	8"x8"	6"x6", 8"x8", 12"x12"	6"x6", 12"12"
100-102	6"x6", 8"x8", 12"x12"	8"x8"	6"x6", 8"x8", 12"x12"	6"x6", 12"12"
100-103	6"x6", 8"x8", 12"x12"	8"x8"	6"x6", 8"x8", 12"x12"	6"x6", 12"12"
100-104	6"x6", 8"x8", 12"x12"	8"x8"	6"x6", 8"x8", 12"x12"	6"x6", 12"12"
100-105	6"x6", 8"x8", 12"x12"	8"x8"	6"x6", 8"x8", 12"x12"	6"x6", 12"12"



1. FINISHES:

Matte, Rustic, Tread and Polished

Thickness: 5/16" mm

Recommended Grout Joint: 3/16" or greater

Grout joints of 1/8" inch or less, may require floor flatness values in excess of the 1/4" in 10' (or 1/16" in 1.0') standard required by ANSI.

2. TECHNICAL DATA

Physical Properties	ASTM Test	Industry Standards	Mondani Results
Water Absorption	C373	Impervious <0.5%	≤ 0.1%
Bond Strength	C482	≥ 50 psi	≥ 200 psi
Breaking Strength	C648	≥ 250 lbf	≥ 350-420 lbf
	Scratch Test		
Hardness (Mohs)	(No regulated)	Range 0 - 10	≥ 6
Frost Resistance		No sample must show alterations to surface	Resistant
(Freeze/Thaw)	C1026	No Requirement	
Chemical Resistance	C650	Range E - A	Unaffected
Coefficient of Friction (Dynamic)	DCOF Acutest sn (wet)	≥ 0.42*	≥ 0.50-0.60*
Aesthetic Classification	Visual Evaluation Shade & Texture	No Requirement	V1
		Range V0 - V4	

* All values given are for matte, rustic and tread material. No values are given for polished material. Mondani Collection. does not recommend polished surfaces in area subject to exposure from grease, oil or water.

For level interior spaces to be walked upon when wet (see ANSI A137.1 section 6.2.2.1.10 – Section 9.6 for test procedure).

3. INSTALLATION

All installation work using Mondani Collection tiles will conform to the standards set forth in the latest version of ANSI A108/118 and/or the TCNA Handbook for Ceramic Tile installations.

Installation or setting materials:

Movement joints shall be provided throughout the tile and work will conform to ANSI Specification A108.01-3.7; A108.02 – 4.4. and TCNA Details EJ171.

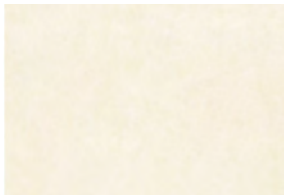
Setting materials used will conform to the ANSI 118.4 standard or greater and be recommended by the selected manufacturer for the installation & setting materials for ceramic or porcelain tile based on the application requirements.



Building Blocks

Building Blox is a natural stone look with several great color options.

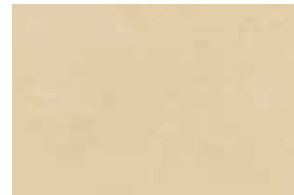
1. 7 colors
2. All available in Matte or Polished
3. Rectified color body porcelain
4. Mosaics and trim available in matte finish only



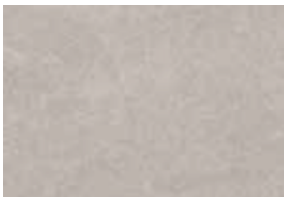
200-101



200-102



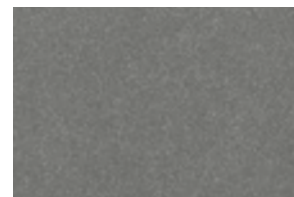
200-103



200-104



200-105

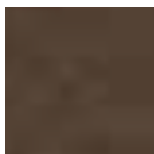


200-106



200-107

Sizes, Mosaics and Trims



24x24



12x24



12x12



6x24



**Bullnose
3x12**



**Cove Base
6x12**



**3x3 Mosaic
Sheet Size: 12x12**



**1x2 Herringbone
Mosaic
Sheet Size: 12x12**



**1x12 Mosaic
Sheet Size: 12x12**



**3x6 Brick Mosaic
Sheet Size: 12x12**

1. FINISHES:

Matte and Polished

Thickness: 8 mm

Recommended Grout Joint: 3/32" or greater

All sizes modular with 3/16" grout joint

Grout joints of 1/8" inch or less, may require floor flatness values in excess of the 1/4" in 10' (or 1/16" in 1.0') standard required by ANSI.

2. TECHNICAL DATA

Physical Properties	ASTM Test	Industry Standards	Mondani Results
Water Absorption	C373	Impervious <0.5%	< 0.1%
Bond Strength	C482	≥ 50 psi	≥ 200 psi
Breaking Strength	C648	≥ 250 lbf	≥ 400 lbf
Hardness (Mohs)	(No regulated)	Range 0 - 10	≥ 7
Frost Resistance (Freeze/Thaw)	C1026	No sample must show alterations to surface	Resistant
Chemical Resistance	C650	No Requirement	Unaffected
Coefficient of Friction (Dynamic)	DCOF Acutest (wet)	≥ 0.42*	≥ 0.42
Aesthetic Classification	Visual Evaluation Shade & Texture	No Requirement	V2

* All values given are for matte and semi-polished. No values are given for polished material. Mondani Collection does not recommend polished surfaces in area subject to exposure from grease, oil or water.

For level interior spaces to be walked upon when wet (see ANSI A137.1 section 6.2.2.1.10 – Section 9.6 for test procedure).

3. INSTALLATION

All installation work using Mondani Collection tiles will conform to the standards set forth in the latest version of ANSI A108/118 and/or the TCNA Handbook for Ceramic Tile installations.

Installation or setting materials:

Movement joints shall be provided throughout the tile and work will conform to ANSI Specification A108.01-3.7; A108.02 – 4.4. and TCNA Details EJ171.

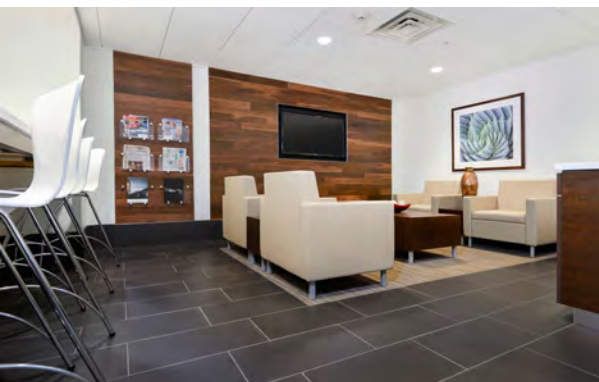
Setting materials used will conform to the ANSI 118.4 standard or greater and be recommended by the selected manufacturer for the installation & setting materials for ceramic or porcelain tile based on the application requirements.





Floor and Wall Solutions

Order Samples at
331-702-2178
www.mondanicollection.com



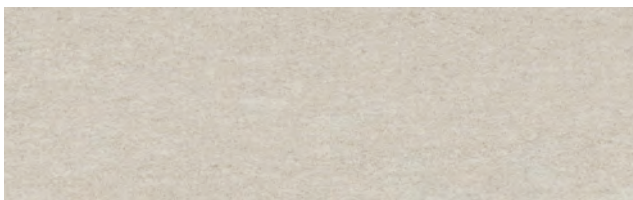
USA
MADE/STOCK



Contemporary Basalt

Inspired by windblown sand and highlighted with mica chips that glisten with the light, Contemporary Basalt is a timeless elegant collection.

1. 6 colors and 2 sizes
2. Matte and Semi-Polished finishes
3. Mosaic and trim pieces available in matte finish only
4. Rectified



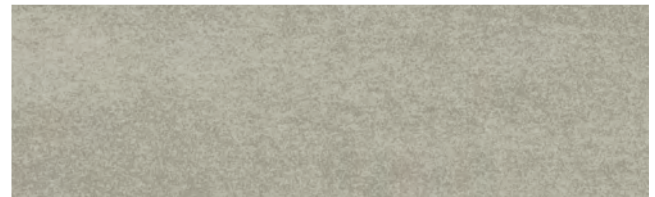
200-201



200-202



200-203



200-204

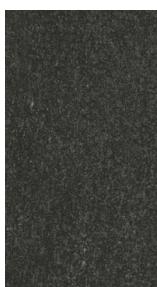


200-205

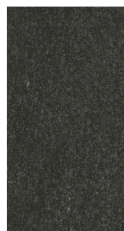


200-206

Sizes, Mosaics and Trims



18x36



12x24



2x2 Mosaic
Sheet Size: 12x12



1x2 Brick Mosaic
Sheet Size: 12x12



Bullnose
4x24



Cove Base
6x12



1. FINISHES:

Matte and Semi-Polished

Thickness: 8 mm

Recommended Grout Joint: 3/32" or greater

All sizes modular with 3/16" grout joint

Grout joints of 1/8" inch or less, may require floor flatness values in excess of the 1/4" in 10' (or 1/16" in 1.0') standard required by ANSI.

2. TECHNICAL DATA

Physical Properties	ASTM Test	Industry Standards	Mondani Results
Water Absorption	C373	Impervious <0.5%	≤ 0.1%
Bond Strength	C482	≥ 50 psi	≥ 200 psi
Breaking Strength	C648	≥ 250 lbf	≥ 400 lbf
Hardness (Mohs)	(No regulated)	Range 0 - 10	≥ 7
Frost Resistance (Freeze/Thaw)	C1026	No sample must show alterations to surface	Resistant
Chemical Resistance	C650	No Requirement	Unaffected
Coefficient of Friction (Dynamic)	DCOF Acutest sn (wet)	≥ 0.42*	≥ 0.42
Aesthetic Classification	Visual Evaluation Shade & Texture	No Requirement	V2

* All values given are for matte and semi-polished. No values are given for polished material. Mondani Collection does not recommend polished surfaces in area subject to exposure from grease, oil or water.

For level interior spaces to be walked upon when wet (see ANSI A137.1 section 6.2.2.1.10 – Section 9.6 for test procedure).

3. INSTALLATION

All installation work using Mondani Collection tiles will conform to the standards set forth in the latest version of ANSI A108/118 and/or the TCNA Handbook for Ceramic Tile installations.

Installation or setting materials:

Movement joints shall be provided throughout the tile and work will conform to ANSI Specification A108.01-3.7; A108.02 – 4.4. and TCNA Details EJ171.

Setting materials used will conform to the ANSI 118.4 standard or greater and be recommended by the selected manufacturer for the installation & setting materials for ceramic or porcelain tile based on the application requirements.

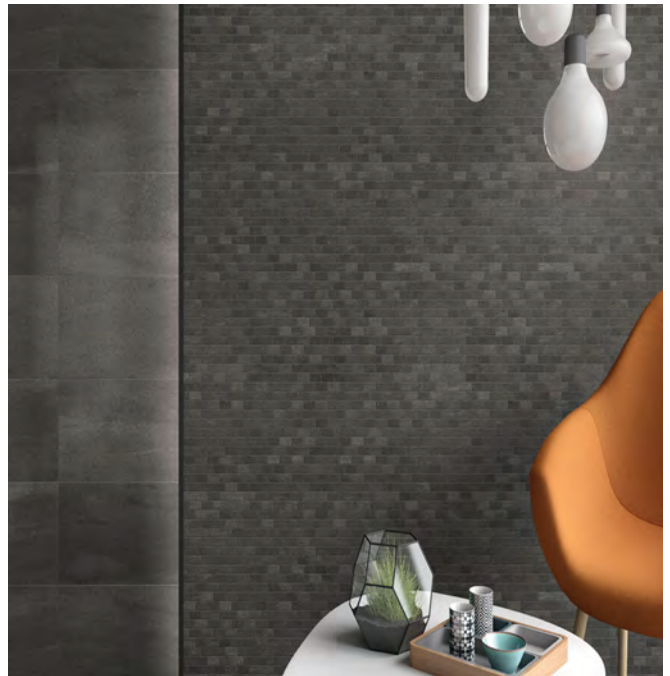
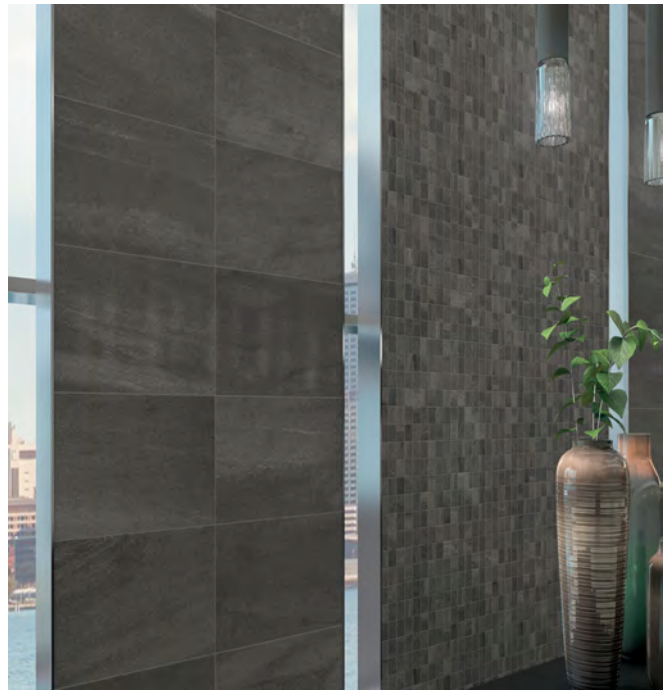


MONDANI

COLLECTION

Floor and Wall Solutions

Order Samples at
331-702-2178
www.mondanicollection.com



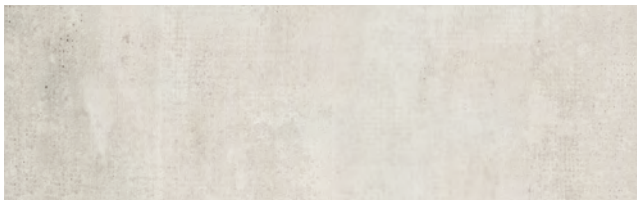
USA
MADE/STOCK



Urban Linen

The Urban Linen series is a unique fabric look with a contemporary flair, if you are looking for a retro or modern look Urban Linen will be a great choice.

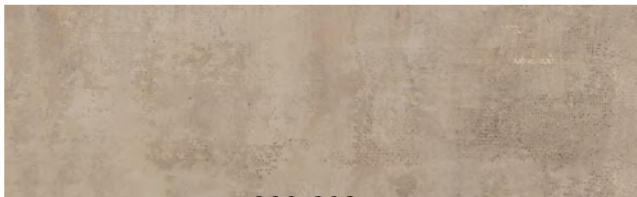
1. 5 Neutral colors
2. Matte and Semi-Polished finish
3. Mosaics and Trim available in matte only
4. Rectified



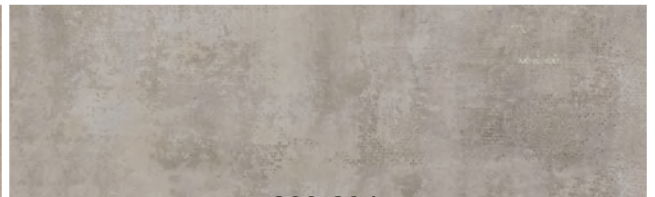
200-301



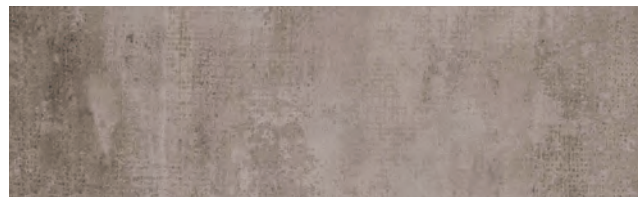
200-302



200-303



200-304



200-305

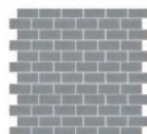
Sizes, Mosaics and Trims



12x24



2x2 Mosaic
Sheet Size: 12x12



1x2 Brick Mosaic
Sheet Size: 12x12



Bullnose
4x24



Cove Base
6x12



1. FINISHES:

Matte and Semi-Polished

Thickness: 8 mm

Recommended Grout Joint: 3/32" or greater

All sizes modular with 3/16" grout joint

Grout joints of 1/8" inch or less, may require floor flatness values in excess of the 1/4" in 10' (or 1/16" in 1.0') standard required by ANSI.

2. TECHNICAL DATA

Physical Properties	ASTM Test	Industry Standards	Mondani Results
Water Absorption	C373	Impervious <0.5%	≤ 0.1%
Bond Strength	C482	≥ 50 psi	≥ 200 psi
Breaking Strength	C648	≥ 250 lbf	≥ 400 lbf
	Scratch Test		
Hardness (Mohs)	(No regulated)	Range 0 - 10	≥ 7
Frost Resistance		No sample must show alterations to surface	Resistant
(Freeze/Thaw)	C1026	No Requirement	
Chemical Resistance	C650	Range E - A	Unaffected
Coefficient of Friction (Dynamic)	DCOF Acutest m (wet)	≥ 0.42*	≥ 0.42
Aesthetic Classification	Visual Evaluation Shade & Texture	No Requirement	
		Range V0 - V4	V2

* All values given are for matte and semi-polished. No values are given for polished material. Mondani Collection does not recommend polished surfaces in area subject to exposure from grease, oil or water.

For level interior spaces to be walked upon when wet (see ANSI A137.1 section 6.2.2.1.10 – Section 9.6 for test procedure).

3. INSTALLATION

All installation work using Mondani Collection tiles will conform to the standards set forth in the latest version of ANSI A108/118 and/or the TCNA Handbook for Ceramic Tile installations.

Installation or setting materials:

Movement joints shall be provided throughout the tile and work will conform to ANSI Specification A108.01-3.7; A108.02 – 4.4. and TCNA Details EJ171.

Setting materials used will conform to the ANSI 118.4 standard or greater and be recommended by the selected manufacturer for the installation & setting materials for ceramic or porcelain tile based on the application requirements.



MONDANI

COLLECTION

Floor and Wall Solutions

Order Samples at
331-702-2178
www.mondanicollection.com



USA
MADE/STOCK



Iconic

Classic Carrara Marble Look with a contemporary flair.

1. 5 Colors
2. Matte and Polished Finishes
3. 3 Sizes
4. Mosaics and Trim available in matte finish only
5. Rectified



200-501



200-502



200-503



200-504



200-505

Sizes, Mosaics and Trims



24x48



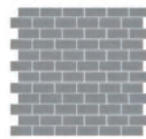
12x24



4x12



2x2 Mosaic
Sheet Size: 12x12



1x2 Brick Mosaic
Sheet Size: 12x12



Bullnose
4x24



Cove Base
6x12



1. FINISHES:

Matte and Polished

Thickness: 8 mm

Recommended Grout Joint: 3/32" or greater

All sizes modular with 3/16" grout joint

Grout joints of 1/8" inch or less, may require floor flatness values in excess of the 1/4" in 10' (or 1/16" in 1.0') standard required by ANSI.

2. TECHNICAL DATA

Physical Properties	ASTM Test	Industry Standards	Mondani Results
Water Absorption	C373	Impervious <0.5%	≤ 0.1%
Bond Strength	C482	≥ 50 psi	≥ 200 psi
Breaking Strength	C648	≥ 250 lbf	≥ 400 lbf
Hardness (Mohs)	(No regulated)	Range 0 - 10	≥ 7
Frost Resistance (Freeze/Thaw)	C1026	No sample must show alterations to surface	Resistant
Chemical Resistance	C650	No Requirement	Unaffected
Coefficient of Friction (Dynamic)	DCOF Acutest sn (wet)	Range E - A	Unaffected
Aesthetic Classification	Visual Evaluation Shade & Texture	≥ 0.42*	≥ 0.42
		No Requirement	
		Range V0 - V4	V2

* All values given are for matte and semi-polished. No values are given for polished material. Mondani Collection does not recommend polished surfaces in area subject to exposure from grease, oil or water.

For level interior spaces to be walked upon when wet (see ANSI A137.1 section 6.2.2.1.10 – Section 9.6 for test procedure).

3. INSTALLATION

All installation work using Mondani Collection tiles will conform to the standards set forth in the latest version of ANSI A108/118 and/or the TCNA Handbook for Ceramic Tile installations.

Installation or setting materials:

Movement joints shall be provided throughout the tile and work will conform to ANSI Specification A108.01-3.7; A108.02 – 4.4. and TCNA Details EJ171.

Setting materials used will conform to the ANSI 118.4 standard or greater and be recommended by the selected manufacturer for the installation & setting materials for ceramic or porcelain tile based on the application requirements.

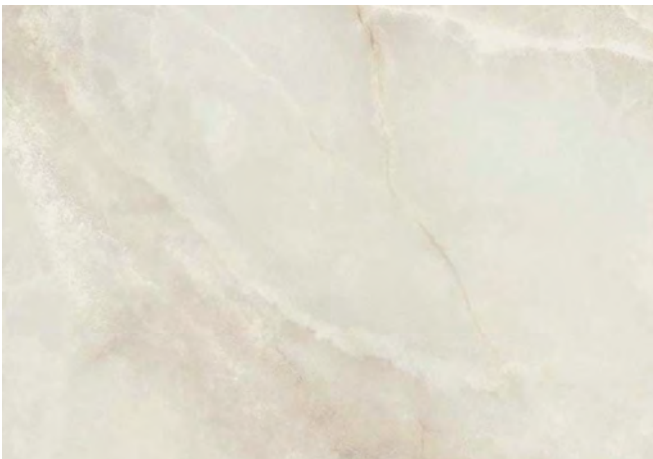


MONDANI

COLLECTION

Floor and Wall Solutions

Order Samples at
331-702-2178
www.mondanicolLECTION.com



Contour

This tone on tone porcelain was inspired by the seashore, Contour is a timeless look.

1. 5 tranquil colors
2. 12x24 18x36 available in matte finish
3. 18x36 also available in Semi-Polished
4. Mosaics and Trim available in matte finish only
5. Rectified



200-401



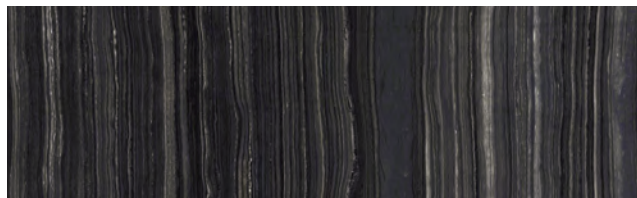
200-402



200-403



200-404



200-405

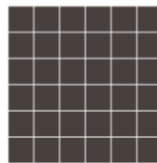
Sizes, Mosaics and Trims



18x36



12x24



2x2 mosaic
Sheet Size: 12x12



Bullnose
3x24



Cove Base
6x12





Floor and Wall Solutions

Order Samples at
331-702-2178
www.mondanicollection.com

1. FINISHES:

Matte and Semi-Polished

Thickness: 8 mm

Recommended Grout Joint: 3/32" or greater

All sizes modular with 3/16" grout joint

Grout joints of 1/8" inch or less, may require floor flatness values in excess of the 1/4" in 10' (or 1/16" in 1.0') standard required by ANSI.

2. TECHNICAL DATA

Physical Properties	ASTM Test	Industry Standards	Mondani Results
Water Absorption	C373	Impervious <0.5%	≤ 0.1%
Bond Strength	C482	≥ 50 psi	≥ 200 psi
Breaking Strength	C648	≥ 250 lbf	≥ 400 lbf
Hardness (Mohs)	(No regulated)	Range 0 - 10	≥ 7
Frost Resistance (Freeze/Thaw)	C1026	No sample must show alterations to surface	Resistant
Chemical Resistance	C650	No Requirement	Unaffected
Coefficient of Friction (Dynamic)	DCOF Acutest sn (wet)	≥ 0.42*	≥ 0.42
Aesthetic Classification	Visual Evaluation Shade & Texture	No Requirement	V2

* All values given are for matte and semi-polished. No values are given for polished material. Mondani Collection does not recommend polished surfaces in area subject to exposure from grease, oil or water.

For level interior spaces to be walked upon when wet (see ANSI A137.1 section 6.2.2.1.10 – Section 9.6 for test procedure).

3. INSTALLATION

All installation work using Mondani Collection tiles will conform to the standards set forth in the latest version of ANSI A108/118 and/or the TCNA Handbook for Ceramic Tile installations.

Installation or setting materials:

Movement joints shall be provided throughout the tile and work will conform to ANSI Specification A108.01-3.7; A108.02 – 4.4. and TCNA Details EJ171.

Setting materials used will conform to the ANSI 118.4 standard or greater and be recommended by the selected manufacturer for the installation & setting materials for ceramic or porcelain tile based on the application requirements.



MONDANI

COLLECTION

Floor and Wall Solutions

Order Samples at
331-702-2178
www.mondanicollection.com



USA
MADE/STOCK



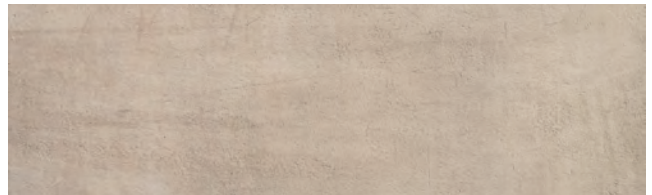
Kanto

An urban concrete effect with subtle movement lead to a contemporary style with outstanding material performance makes Kanto a great choice for your projects.

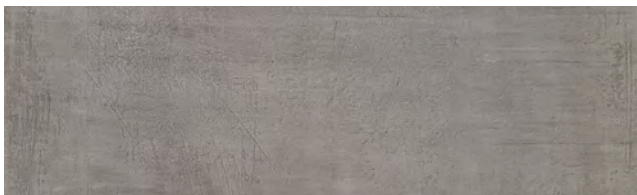
1. 4 Colors
2. 12" x 24"
3. Matte Finish
4. Mosaics and trim available



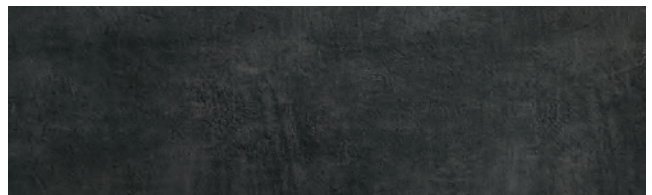
300-101



300-102



300-103



300-104

Sizes, Mosaics and Trims



12x24



2x2 mosaic
Sheet Size: 12x12



Bullnose
3x24



1. FINISHES:

Matte

Thickness: 9 mm

Recommended Grout Joint: 3/32" or greater

All sizes modular with 3/16" grout joint

Grout joints of 1/8" inch or less, may require floor flatness values in excess of the 1/4" in 10' (or 1/16" in 1.0') standard required by ANSI.

2. TECHNICAL DATA

Physical Properties	ASTM Test	Industry Standards	Mondani Results
Water Absorption	C373	Impervious <0.5%	< 0.50%
Bond Strength	C482	≥ 50 psi	≥ 200 psi
Breaking Strength	C648	≥ 250 lbf	≥ 400 lbf
	Scratch Test		
Hardness (Mohs)	(No regulated)	Range 0 - 10	≥ 6
Frost Resistance		No sample must show alterations to surface	Resistant
(Freeze/Thaw)	C1026	No Requirement	
Chemical Resistance	C650	Range E - A	Unaffected
	DCOF Acutest		
Coefficient of Friction (Dynamic)	sn (wet)	≥ 0.42*	≥ 0.42
Aesthetic Classification	Visual Evaluation Shade & Texture	Range V0 - V4	V2

* All values given are for mattem. No values are given for polished material. Mondani Collection. does not recommend polished surfaces in area subject to exposure from grease, oil or water.

For level interior spaces to be walked upon when wet (see ANSI A137.1 section 6.2.2.1.10 – Section 9.6 for test procedure).

3. INSTALLATION

All installation work using Mondani Collection tiles will conform to the standards set forth in the latest version of ANSI A108/118 and/or the TCNA Handbook for Ceramic Tile installations.

Installation or setting materials:

Movement joints shall be provided throughout the tile and work will conform to ANSI Specification A108.01-3.7; A108.02 – 4.4. and TCNA Details EJ171.

Setting materials used will conform to the ANSI 118.4 standard or greater and be recommended by the selected manufacturer for the installation & setting materials for ceramic or porcelain tile based on the application requirements.



MONDANI

COLLECTION

Floor and Wall Solutions

Order Samples at
331-702-2178
www.mondanicollection.com



Modern Burlap

Beautiful fabric effect with sophisticated soft colors make Modern Burlap an excellent choice for you next project.

1. 4 Colors
2. 12" x 24"
3. Matte finish
4. Mosaics and trim available



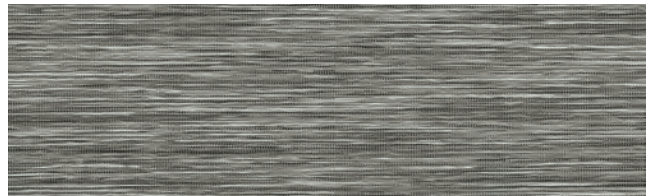
300-201



300-202

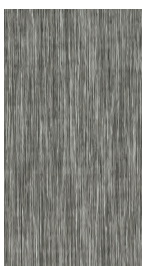


300-203



300-204

Sizes, Mosaics and Trims



12x24



2x2 mosaic
Sheet Size: 12x12



Bullnose
3x24



1. FINISHES:

Matte

Thickness: 9 mm

Recommended Grout Joint: 1/8" or greater

All sizes modular with 3/16" grout joint

Grout joints of 1/8" inch or less, may require floor flatness values in excess of the 1/4" in 10' (or 1/16" in 1.0') standard required by ANSI.

2. TECHNICAL DATA

Physical Properties	ASTM Test	Industry Standards	Mondani Results
Water Absorption	C373	Impervious <0.5%	≤ 0.5%
Bond Strength	C482	≥ 50 psi	≥ 200 psi
Breaking Strength	C648	≥ 250 lbf	≥ 400 lbf
Hardness (Mohs)	(No regulated)	Range 0 - 10	> 6
Frost Resistance (Freeze/Thaw)	C1026	No sample must show alterations to surface	Resistant
Chemical Resistance	C650	No Requirement	Unaffected
Coefficient of Friction (Dynamic)	DCOF Acutest (wet)	Range E - A	≥ 0.42*
Aesthetic Classification	Visual Evaluation Shade & Texture	≥ 0.60	No Requirement
		Range V0 - V4	V2

* All values given are for matte. No values are given for polished material. Mondani Collection. does not recommend polished surfaces in area subject to exposure from grease, oil or water.

For level interior spaces to be walked upon when wet (see ANSI A137.1 section 6.2.2.1.10 – Section 9.6 for test procedure).

3. INSTALLATION

All installation work using Mondani Collection tiles will conform to the standards set forth in the latest version of ANSI A108/118 and/or the TCNA Handbook for Ceramic Tile installations.

Installation or setting materials:

Movement joints shall be provided throughout the tile and work will conform to ANSI Specification A108.01-3.7; A108.02 – 4.4. and TCNA Details EJ171.

Setting materials used will conform to the ANSI 118.4 standard or greater and be recommended by the selected manufacturer for the installation & setting materials for ceramic or porcelain tile based on the application requirements.



MONDANI COLLECTION

Floor and Wall Solutions

Order Samples at
331-702-2178
www.mondanicollection.com



USA
MADE/STOCK



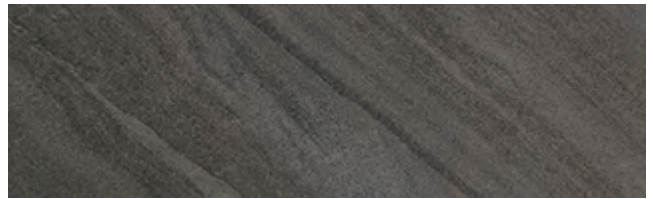
Foundation

Natural stone look porcelain with subtle veining make for a dynamic design esthetic. Foundation is beautiful tile with 4 rich colors that fits a wide range of design projects.

1. 4 Colors
2. 3 sizes
3. Matte finish
4. Mosaics and trim available
5. Rectified



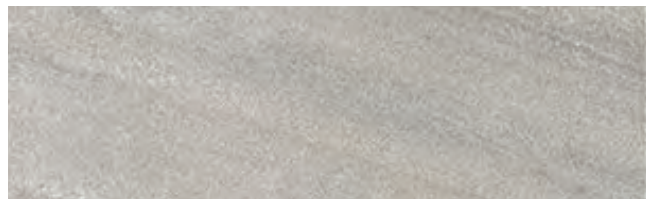
400-201



400-202



400-203

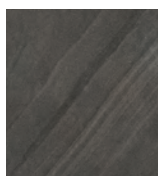


400-204

Sizes, Mosaics and Trims



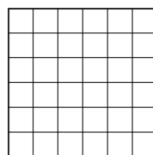
24x48



24x24



12x24



2x2 mosaic
Sheet Size: 12x12



Bullnose
3x24



Cove Base
6x12



1. FINISHES:

Matte

Thickness: 9 mm

Recommended Grout Joint: 3/32" or greater

All sizes modular with 3/16" grout joint

Grout joints of 1/8" inch or less, may require floor flatness values in excess of the 1/4" in 10' (or 1/16" in 1.0') standard required by ANSI.

2. TECHNICAL DATA

Physical Properties	ASTM Test	Industry Standards	Mondani Results
Water Absorption	C373	Impervious <0.5%	≤ 0.1%
Bond Strength	C482	≥ 50 psi	≥ 200 psi
Breaking Strength	C648	≥ 250 lbf	≥ 400 lbf
Hardness (Mohs)	Scratch Test	Range 0 - 10	6
Frost Resistance	(No regulated)	No sample must show alterations to surface	Resistant
(Freeze/Thaw)	C1026	No Requirement	
Chemical Resistance	C650	Range F - A	Unaffected
Coefficient of Friction (Dynamic)	DCOF Acutest ^{sn} (wet)	≥ 0.42*	≥ 0.42
Aesthetic Classification	Visual Evaluation Shade & Texture	Range V0 - V4	V2

* All values given are for matte. No values are given for polished material. Mondani Collection. does not recommend polished surfaces in area subject to exposure from grease, oil or water.

For level interior spaces to be walked upon when wet (see ANSI A137.1 section 6.2.2.1.10 – Section 9.6 for test procedure).

3. INSTALLATION

All installation work using Mondani Collection tiles will conform to the standards set forth in the latest version of ANSI A108/118 and/or the TCNA Handbook for Ceramic Tile installations.

Installation or setting materials:

Movement joints shall be provided throughout the tile and work will conform to ANSI Specification A108.01-3.7; A108.02 – 4.4. and TCNA Details EJ171.

Setting materials used will conform to the ANSI 118.4 standard or greater and be recommended by the selected manufacturer for the installation & setting materials for ceramic or porcelain tile based on the application requirements.



MONDANI

COLLECTION

Floor and Wall Solutions

Order Samples at
331-702-2178
www.mondanicollecion.com



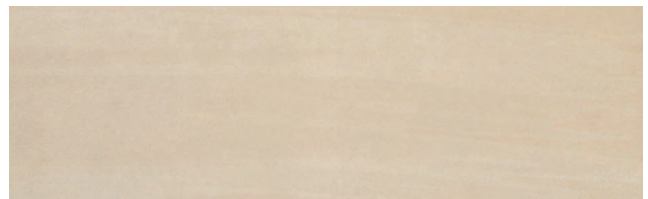
Destination

Tone on tone directional lines create the contemporary look of Destination. The directional pattern can be installed in the same direction or in a random fashion.

1. 4 sizes
2. 4 colors
3. Matte finish
4. Mosaics and trim available
5. Rectified



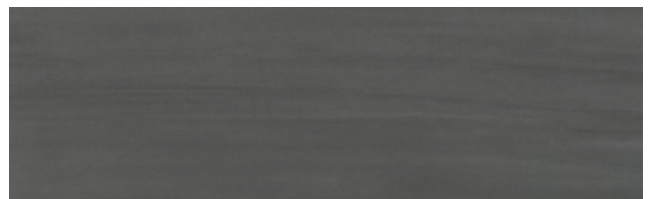
400-101



400-102



400-103

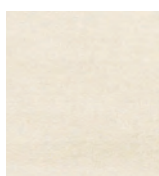


400-104

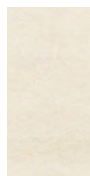
Sizes, Mosaics and Trims



24x48



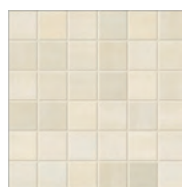
24x24



12x24



6x24



2x2 mosaic
Sheet Size: 12x12



Bullnose
3x24



Cove Base
6x12



1. FINISHES:

Matte

Thickness: 9 mm

Recommended Grout Joint: 3/32" or greater

All sizes modular with 3/16" grout joint

Grout joints of 1/8" inch or less, may require floor flatness values in excess of the 1/4" in 10' (or 1/16" in 1.0') standard required by ANSI.

2. TECHNICAL DATA

Physical Properties	ASTM Test	Industry Standards	Mondani Results
Water Absorption	C373	Impervious <0.5%	≤ 0.1%
Bond Strength	C482	≥ 50 psi	≥ 200 psi
Breaking Strength	C648	≥ 250 lbf	≥ 400 lbf
	Scratch Test		
Hardness (Mohs)	(No regulated)	Range 0 - 10	6
Frost Resistance		No sample must show alterations to surface	
(Freeze/Thaw)	C1026	No Requirement	Resistant
Chemical Resistance	C650	Range E - A	Unaffected
Coefficient of Friction (Dynamic)	DCOF Acutest sn (wet)	≥ 0.42*	≥ 0.42
Aesthetic Classification	Visual Evaluation Shade & Texture	Range V0 - V4	V2

* All values given are for matte. No values are given for polished material. Mondani Collection. does not recommend polished surfaces in area subject to exposure from grease, oil or water.

For level interior spaces to be walked upon when wet (see ANSI A137.1 section 6.2.2.1.10 – Section 9.6 for test procedure).

3. INSTALLATION

All installation work using Mondani Collection tiles will conform to the standards set forth in the latest version of ANSI A108/118 and/or the TCNA Handbook for Ceramic Tile installations.

Installation or setting materials:

Movement joints shall be provided throughout the tile and work will conform to ANSI Specification A108.01-3.7; A108.02 – 4.4. and TCNA Details EJ171.

Setting materials used will conform to the ANSI 118.4 standard or greater and be recommended by the selected manufacturer for the installation & setting materials for ceramic or porcelain tile based on the application requirements.



MONDANI

COLLECTION

Floor and Wall Solutions

Order Samples at
331-702-2178
www.mondanicollection.com



Terrazzo Effect

An attractive blend of concrete and stone with gentle movement of fine grains speaks to the modern elegance of Terrazzo.

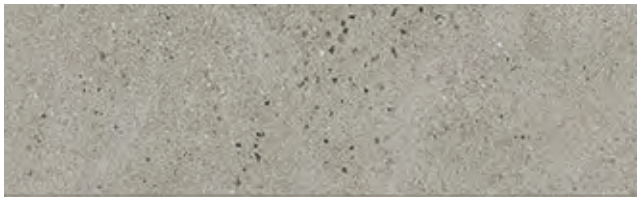
1. 4 Colors
2. 4 Sizes
3. Matte finish
4. Mosaics and trim available
5. Rectified



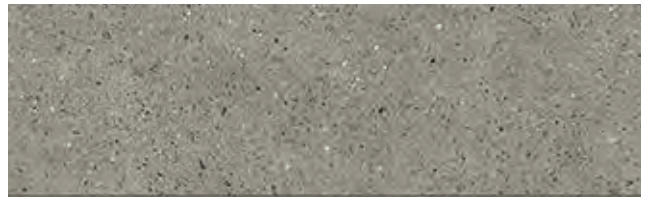
400-301



400-302



400-303

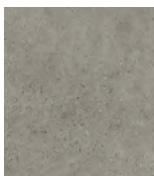


400-304

Sizes, Mosaics and Trims



24x48



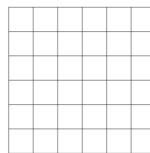
24x24



12x24



6x24



2x2 mosaic
Sheet Size: 12x12



Bullnose
3x24



Cove Base
6x12



1. FINISHES:

Matte

Thickness: 9mm

Recommended Grout Joint: 3/32" or greater

All sizes modular with 3/16" grout joint

Grout joints of 1/8" inch or less, may require floor flatness values in excess of the 1/4" in 10' (or 1/16" in 1.0') standard required by ANSI.

2. TECHNICAL DATA

Physical Properties	ASTM Test	Industry Standards	Mondani Results
Water Absorption	C373	Impervious <0.5%	≤ 0.1%
Bond Strength	C482	≥ 50 psi	≥ 200 psi
Breaking Strength	C648	≥ 250 lbf	≥ 400 lbf
Hardness (Mohs)	(No regulated)	Range 0 - 10	≥ 7
Frost Resistance		No sample must show alterations to surface	Resistant
(Freeze/Thaw)	C1026	No Requirement	
Chemical Resistance	C650	Range E - A	Unaffected
Coefficient of Friction (Dynamic)	DCOF Acutest sn (wet)	≥ 0.42*	≥ 0.42
Aesthetic Classification	Visual Evaluation Shade & Texture	No Requirement	
		Range V0 - V4	V2

* All values given are for matte and semi-polished. No values are given for polished material. Mondani Collection does not recommend polished surfaces in area subject to exposure from grease, oil or water.

For level interior spaces to be walked upon when wet (see ANSI A137.1 section 6.2.2.1.10 – Section 9.6 for test procedure).

3. INSTALLATION

All installation work using Mondani Collection tiles will conform to the standards set forth in the latest version of ANSI A108/118 and/or the TCNA Handbook for Ceramic Tile installations.

Installation or setting materials:

Movement joints shall be provided throughout the tile and work will conform to ANSI Specification A108.01-3.7; A108.02 – 4.4. and TCNA Details EJ171.

Setting materials used will conform to the ANSI 118.4 standard or greater and be recommended by the selected manufacturer for the installation & setting materials for ceramic or porcelain tile based on the application requirements.



MONDANI

COLLECTION

Floor and Wall Solutions

Order Samples at
331-702-2178
www.mondanicollection.com



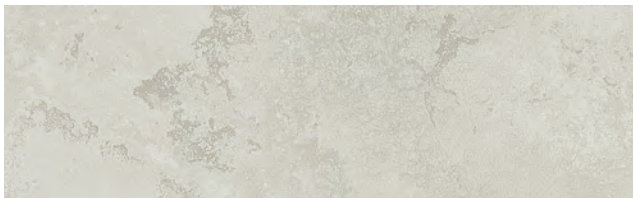
USA
MADE/STOCK



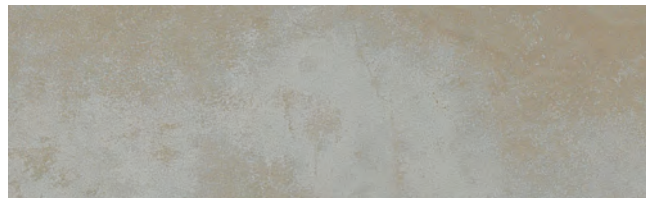
Forge

Beautiful metal effect tile that can be installed on both walls and floors. Forge provides a contemporary metallic look that would look great for both walls and floors in your next project

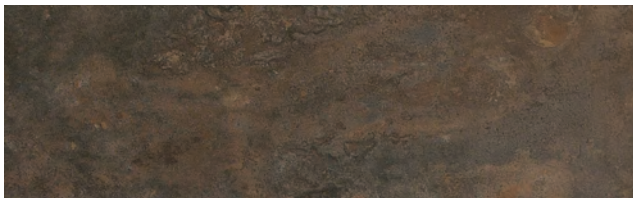
1. 4 Colors
2. 2 sizes
3. Matte finish
4. Mosaics and trim available
5. Rectified



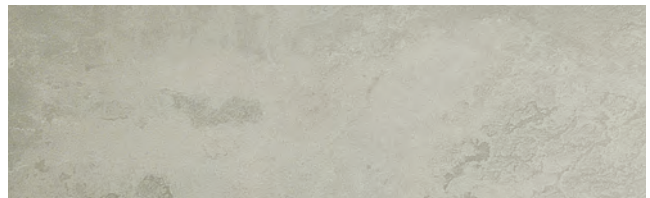
400-401



400-402



400-403



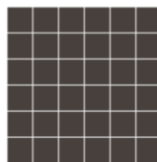
400-404

Sizes, Mosaics and Trims



24x24

12x24



2x2 mosaic
Sheet Size: 12x12



Bullnose
3x24



Cove Base
6x12



1. FINISHES:

Matte

Thickness: 9 mm

Recommended Grout Joint: 3/32" or greater

All sizes modular with 3/16" grout joint

Grout joints of 1/8" inch or less, may require floor flatness values in excess of the 1/4" in 10' (or 1/16" in 1.0') standard required by ANSI.

2. TECHNICAL DATA

Physical Properties	ASTM Test	Industry Standards	Mondani Results
Water Absorption	C373	Impervious <0.5%	Pass
Bond Strength	C482	≥ 50 psi	≥ 200 psi
Breaking Strength	C648	≥ 250 lbf	≥ 400 lbf
Hardness (Mohs)	(No regulated)	Range 0 - 10	≥ 6
Frost Resistance	Scratch Test	No sample must show alterations to surface	Pass
(Freeze/Thaw)	C1026	No Requirement	Pass
Chemical Resistance	C650	Range E - A	Unaffected
Coefficient of Friction (Dynamic)	DCOF Acutest m (wet)	≥ 0.42*	> 0.42
Aesthetic Classification	Visual Evaluation Shade & Texture	No Requirement	V2

* All values given are for matte and semi-polished. No values are given for polished material. Mondani Collection does not recommend polished surfaces in area subject to exposure from grease, oil or water.

For level interior spaces to be walked upon when wet (see ANSI A137.1 section 6.2.2.1.10 – Section 9.6 for test procedure).

3. INSTALLATION

All installation work using Mondani Collection tiles will conform to the standards set forth in the latest version of ANSI A108/118 and/or the TCNA Handbook for Ceramic Tile installations.

Installation or setting materials:

Movement joints shall be provided throughout the tile and work will conform to ANSI Specification A108.01-3.7; A108.02 – 4.4. and TCNA Details EJ171.

Setting materials used will conform to the ANSI 118.4 standard or greater and be recommended by the selected manufacturer for the installation & setting materials for ceramic or porcelain tile based on the application requirements.

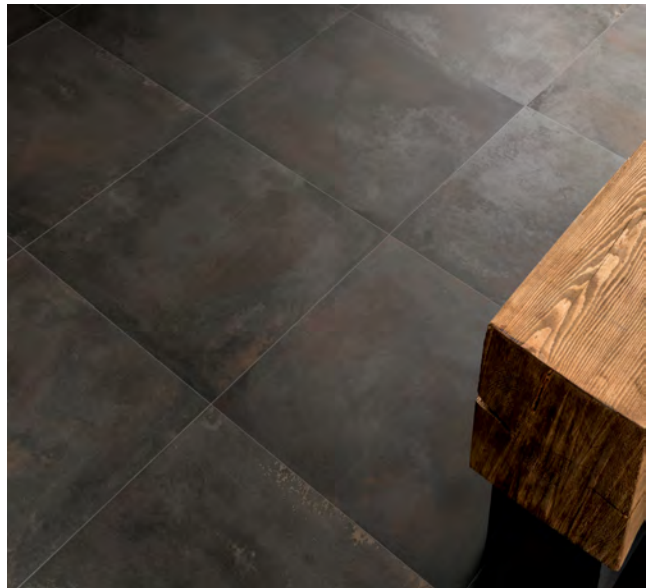
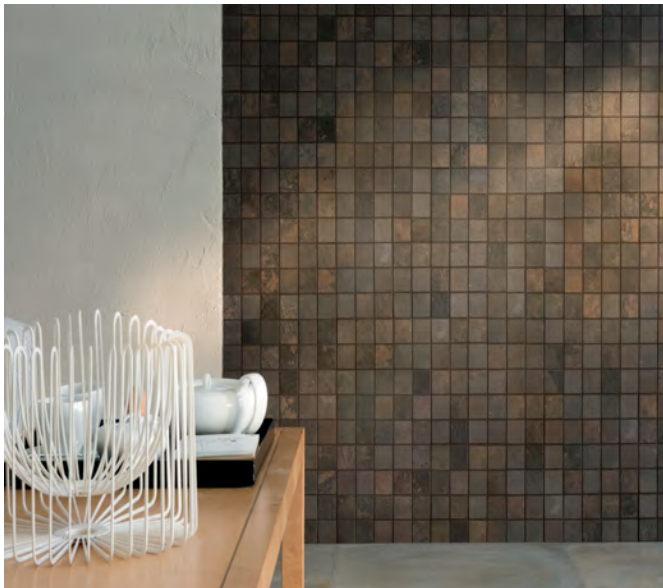


MONDANI

COLLECTION

Floor and Wall Solutions

Order Samples at
331-702-2178
www.mondanicollection.com



USA
MADE/STOCK



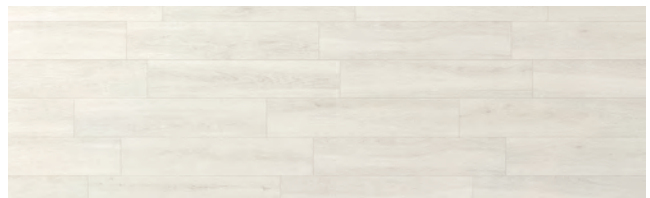
Buzz

Traditional wood tile with subtle grains for a crisp, natural aesthetic. Buzz is a contemporary wood available in both planks and chevrons sizes to meet your design needs.

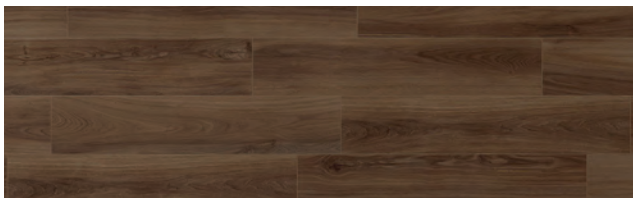
1. 5 Colors
2. Available in rectified planks and chevrons
3. Matte finish
4. Mosaics and trim available



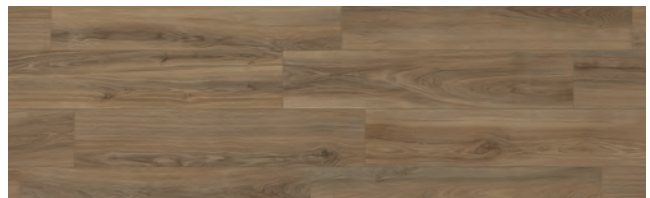
400-501



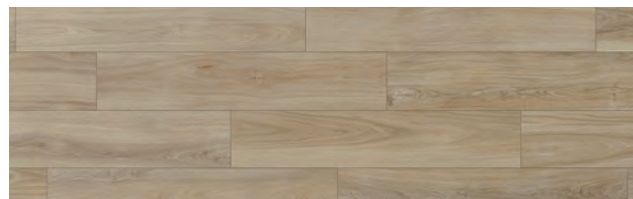
400-502



400-503



400-504



400-505

Sizes, Mosaics and Trims



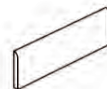
8x40



8x40



Listels Mosaic
2.5x19
Sheet Size: 10x19



Bullnose
2.5x20



1. FINISHES:

Matte

Thickness: 9 mm

Recommended Grout Joint: 3/32" or greater

All sizes modular with 3/16" grout joint

Grout joints of 1/8" inch or less, may require floor flatness values in excess of the 1/4" in 10' (or 1/16" in 1.0') standard required by ANSI.

2. TECHNICAL DATA

Physical Properties	ASTM Test	Industry Standards	Mondani Results
Water Absorption	C373	Impervious <0.5%	Pass
Bond Strength	C482	≥ 50 psi	≥ 200 psi
Breaking Strength	C648	≥ 250 lbf	≥ 400 lbf
	Scratch Test		
Hardness (Mohs)	(No regulated)	Range 0 - 10	≥ 6
Frost Resistance		No sample must show alterations to surface	
(Freeze/Thaw)	C1026	No Requirement	Pass
Chemical Resistance	C650	Range E - A	Unaffected
	DCOF Acutest		
Coefficient of Friction (Dynamic)	m (wet)	≥ 0.42*	> 0.42
Aesthetic Classification	Visual Evaluation Shade & Texture	No Requirement	
		Range V0 - V4	V2

* All values given are for matte and semi-polished. No values are given for polished material. Mondani Collection does not recommend polished surfaces in area subject to exposure from grease, oil or water.

For level interior spaces to be walked upon when wet (see ANSI A137.1 section 6.2.2.1.10 – Section 9.6 for test procedure).

3. INSTALLATION

All installation work using Mondani Collection tiles will conform to the standards set forth in the latest version of ANSI A108/118 and/or the TCNA Handbook for Ceramic Tile installations.

Installation or setting materials:

Movement joints shall be provided throughout the tile and work will conform to ANSI Specification A108.01-3.7; A108.02 – 4.4. and TCNA Details EJ171.

Setting materials used will conform to the ANSI 118.4 standard or greater and be recommended by the selected manufacturer for the installation & setting materials for ceramic or porcelain tile based on the application requirements.



SA

MADE/STOCK

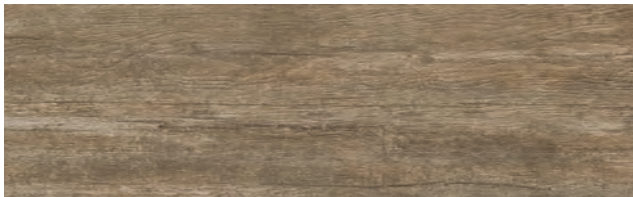




Dance

Traditional wood plank with warm tones gives Dance a rich timeless wood look, perfect for your next project

1. 6 Colors
2. 8" x 36"
3. Matte Finish



600-201



600-202



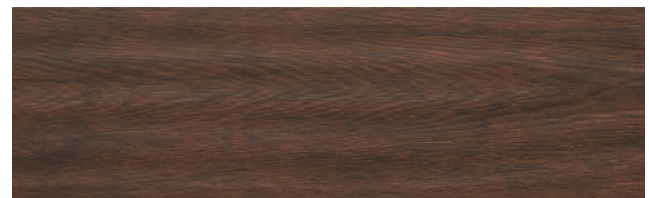
600-203



600-204



600-205



600-206

Sizes, Mosaics and Trims



8x36



1. FINISHES:

Matte

Thickness: 10 mm

Recommended Grout Joint: 3/32" or greater

All sizes modular with 3/16" grout joint

Recycled Content: 40% *Pre-Consumer. Recommended Grout Joint: 3/32" or greater. All sizes modular with 3/16" grout joint

Grout joints of 1/8" inch or less, may require floor flatness values in excess of the 1/4" in 10' (or 1/16" in 1.0') standard required by ANSI.

2. TECHNICAL DATA

Physical Properties	ASTM Test	Industry Standards	Mondani Results
Water Absorption	C373	Impervious <0.5%	Pass
Bond Strength	C482	≥ 50 psi	200 psi
Breaking Strength	C648	≥ 250 lbf	≥ 400 lbf
	Scratch Test		
Hardness (Mohs)	(No regulated)	Range 0 - 10	6
Frost Resistance		No sample must show alterations to surface	
(Freeze/Thaw)	C1026	No Requirement	Pass
Chemical Resistance	C650	Range E - A	Unaffected
Coefficient of Friction (Dynamic)	DCOF Acutest sn (wet)	≥ 0.42*	> 0.42
Aesthetic Classification	Visual Evaluation Shade & Texture	No Requirement Range V0 - V4	No Requirement V3

* All values given are for matte and semi-polished. No values are given for polished material. Mondani Collection does not recommend polished surfaces in area subject to exposure from grease, oil or water.

For level interior spaces to be walked upon when wet (see ANSI A137.1 section 6.2.2.1.10 – Section 9.6 for test procedure).

3. INSTALLATION

All installation work using Mondani Collection tiles will conform to the standards set forth in the latest version of ANSI A108/118 and/or the TCNA Handbook for Ceramic Tile installations.

Installation or setting materials:

Movement joints shall be provided throughout the tile and work will conform to ANSI Specification A108.01-3.7; A108.02 – 4.4. and TCNA Details EJ171.

Setting materials used will conform to the ANSI 118.4 standard or greater and be recommended by the selected manufacturer for the installation & setting materials for ceramic or porcelain tile based on the application requirements.

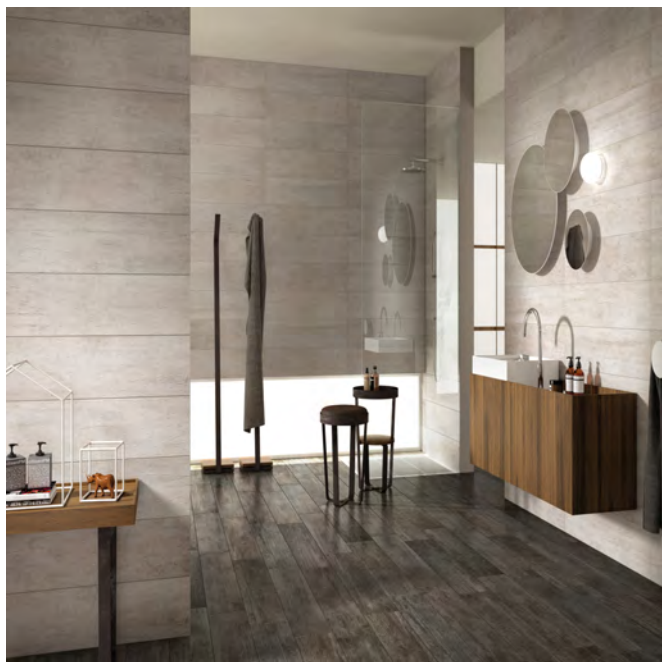


MONDANI

COLLECTION

Floor and Wall Solutions

Order Samples at
331-702-2178
www.mondanicollection.com



USA
MADE/STOCK



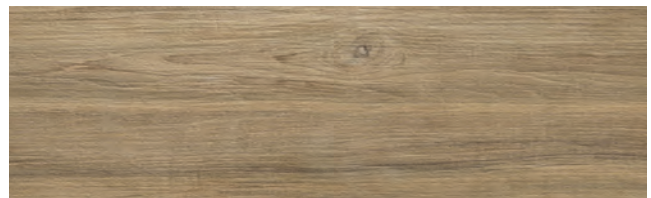
Vivid

Modern wood plank with significant graining gives Vivid a rich contemporary wood look.

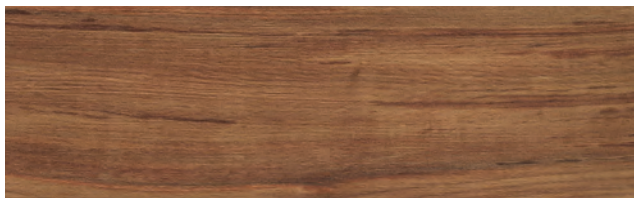
1. 5 Colors
2. 8" x 36"
3. Matte Finish
4. Decos available



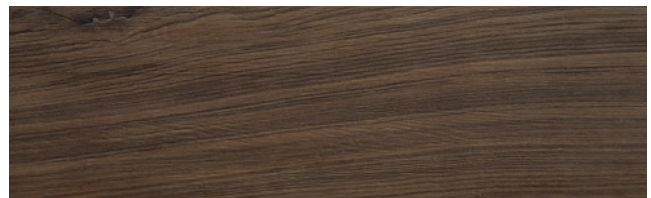
600-101



600-102



600-103

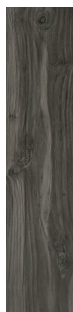


600-104



600-105

Sizes, Mosaics and Trims



8x36



Herringbone Mosaic
Sheet Size: 10x24



1. FINISHES:

Matte

Thickness: 10 mm

Recommended Grout Joint: 3/32" or greater

All sizes modular with 3/16" grout joint

Grout joints of 1/8" inch or less, may require floor flatness values in excess of the 1/4" in 10' (or 1/16" in 1.0') standard required by ANSI.

2. TECHNICAL DATA

Physical Properties	ASTM Test	Industry Standards	Mondani Results
Water Absorption	C373	Impervious <0.5%	≤ 0.1%
Bond Strength	C482	≥ 50 psi	≥ 200 psi
Breaking Strength	C648	≥ 250 lbf	≥ 400 lbf
	Scratch Test		
Hardness (Mohs)	(No regulated)	Range 0 - 10	≥ 7
Frost Resistance		No sample must show alterations to surface	
(Freeze/Thaw)	C1026	No Requirement	Resistant
Chemical Resistance	C650	Range E - A	Unaffected
	DCOF Acutest		
Coefficient of Friction (Dynamic)	sn (wet)	≥ 0.42*	≥ 0.42
Aesthetic Classification	Visual Evaluation Shade & Texture	No Requirement	
		Range V0 - V4	V2

* All values given are for matte and semi-polished. No values are given for polished material. Mondani Collection. does not recommend polished surfaces in area subject to exposure from grease, oil or water.

For level interior spaces to be walked upon when wet (see ANSI A137.1 section 6.2.2.1.10 – Section 9.6 for test procedure).

3. INSTALLATION

All installation work using Mondani Collection tiles will conform to the standards set forth in the latest version of ANSI A108/118 and/or the TCNA Handbook for Ceramic Tile installations.

Installation or setting materials:

Movement joints shall be provided throughout the tile and work will conform to ANSI Specification A108.01-3.7; A108.02 – 4.4. and TCNA Details EJ171.

Setting materials used will conform to the ANSI 118.4 standard or greater and be recommended by the selected manufacturer for the installation & setting materials for ceramic or porcelain tile based on the application requirements.



MONDANI

COLLECTION

Floor and Wall Solutions

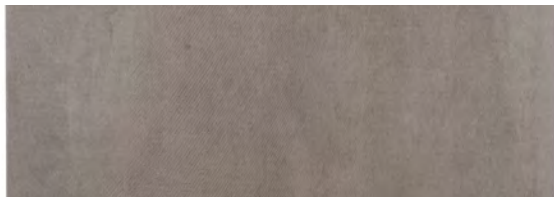
Order Samples at
331-702-2178
www.mondanicollection.com



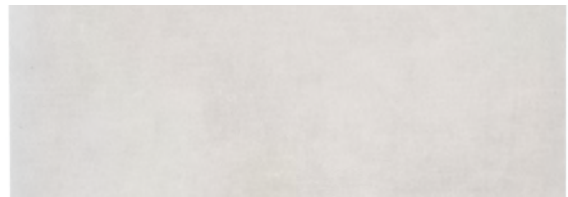
Blend

A beautiful union of cement and fabric create a unique tile with the warmth of textiles and the strength of concrete.

1. 6 Colors
2. Matte finish
3. 12" x 24"
4. Mosaics and trim available



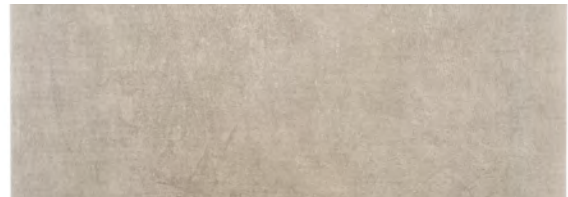
500-101



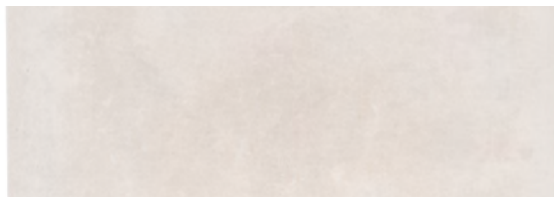
500-102



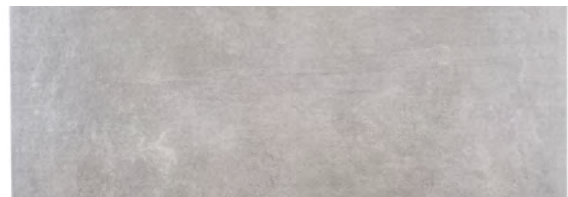
500-103



500-104



500-105

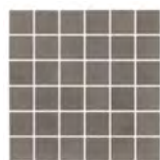


500-106

Sizes, Mosaics and Trims



12x24



2x2 Mosaics
Sheet Size: 12x12



1x3 Interlocking Mosaics
Sheet Size: 12x14



Bullnose
3x12



1. FINISHES:

Matte

Thickness: 8 mm

Recommended Grout Joint: 3/32" or greater

All sizes modular with 3/16" grout joint

Grout joints of 1/8" inch or less, may require floor flatness values in excess of the 1/4" in 10' (or 1/16" in 1.0') standard required by ANSI.

2. TECHNICAL DATA

Physical Properties	ASTM Test	Industry Standards	Mondani Results
Water Absorption	C373	Impervious <0.5%	Pass
Bond Strength	C482	≥ 50 psi	200 psi
Breaking Strength	C648	≥ 250 lbf	≥ 400 lbf
Hardness (Mohs)	(No regulated)	Range 0 - 10	6
Frost Resistance	Scratch Test	No sample must show alterations to surface	Pass
(Freeze/Thaw)	C1026	No Requirement	Pass
Chemical Resistance	C650	Range E - A	Unaffected
Coefficient of Friction (Dynamic)	DCOF Acutest (wet)	≥ 0.42*	> 0.42
Aesthetic Classification	Visual Evaluation Shade & Texture	No Requirement	V2

* All values given are for matte and semi-polished. No values are given for polished material. Mondani Collection does not recommend polished surfaces in area subject to exposure from grease, oil or water.

For level interior spaces to be walked upon when wet (see ANSI A137.1 section 6.2.2.1.10 – Section 9.6 for test procedure).

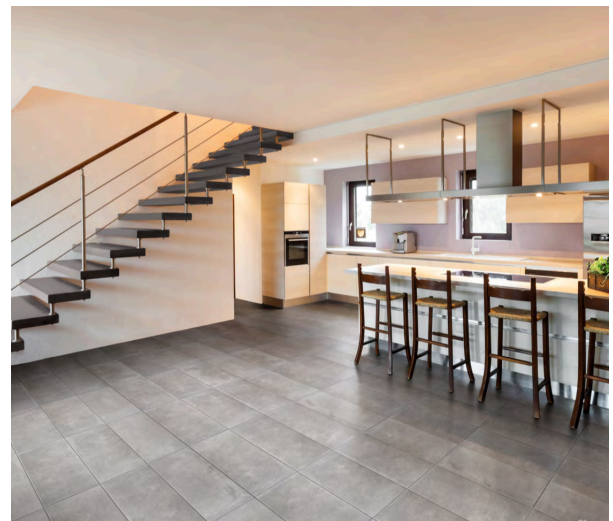
3. INSTALLATION

All installation work using Mondani Collection tiles will conform to the standards set forth in the latest version of ANSI A108/118 and/or the TCNA Handbook for Ceramic Tile installations.

Installation or setting materials:

Movement joints shall be provided throughout the tile and work will conform to ANSI Specification A108.01-3.7; A108.02 – 4.4. and TCNA Details EJ171.

Setting materials used will conform to the ANSI 118.4 standard or greater and be recommended by the selected manufacturer for the installation & setting materials for ceramic or porcelain tile based on the application requirements.

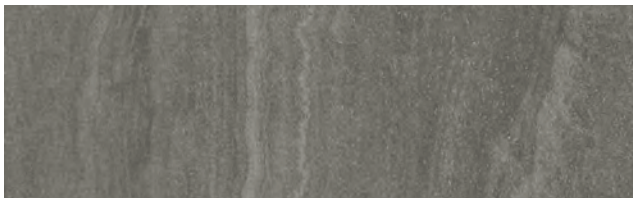




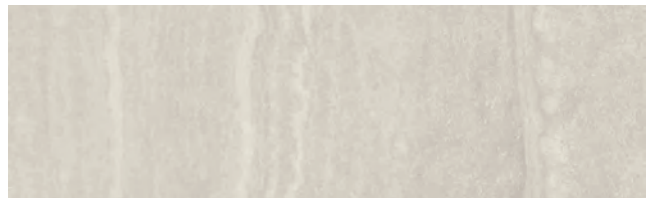
Caprice

Caprice Is a contemporary veined stone look reminiscent of travertine with a quartzite twist. Caprice's soft tones and subtle movement will elevate your projects design style.

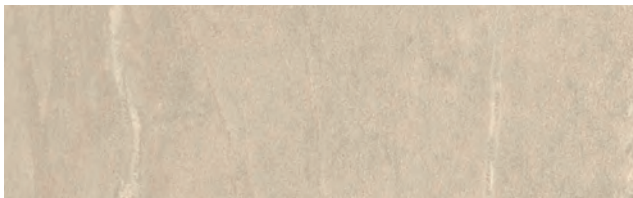
1. 4 Colors
2. Rectified 12" x 24" and 6" x 24"
3. Matte Finish
4. Decos and Cove Base available



400-601



400-602



400-603

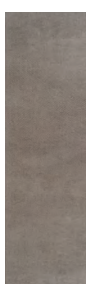


400-604

Sizes, Mosaics and Trims



12x24



6x24



2x2 mosaic
Sheet Size: 12x12



Bullnose
3x24



Cove Base
6x12

1. FINISHES:

Matte

Thickness: 9 mm

Recommended Grout Joint: 3/32" or greater

All sizes modular with 3/16" grout joint

Grout joints of 1/8" inch or less, may require floor flatness values in excess of the 1/4" in 10' (or 1/16" in 1.0') standard required by ANSI.

2. TECHNICAL DATA

Physical Properties	ASTM Test	Industry Standards	Mondani Results
Water Absorption	C373	Impervious <0.5%	Pass
Bond Strength	C482	≥ 50 psi	200 psi
Breaking Strength	C648	≥ 250 lbf	> 250 lbf
Hardness (Mohs)	(No regulated)	Range 0 - 10	6
Frost Resistance		No sample must show alterations to surface	Pass
(Freeze/Thaw)	C1026	No Requirement	
Chemical Resistance	C650	Range E - A	Unaffected
Coefficient of Friction (Dynamic)	DCOF Acutest m (wet)	≥ 0.42*	> 0.42
Aesthetic Classification	Visual Evaluation Shade & Texture	No Requirement	
		Range V0 - V4	V2

* All values given are for matte and semi-polished. No values are given for polished material. Mondani Collection does not recommend polished surfaces in area subject to exposure from grease, oil or water.

For level interior spaces to be walked upon when wet (see ANSI A137.1 section 6.2.2.1.10 – Section 9.6 for test procedure).

3. INSTALLATION

All installation work using Mondani Collection tiles will conform to the standards set forth in the latest version of ANSI A108/118 and/or the TCNA Handbook for Ceramic Tile installations.

Installation or setting materials:

Movement joints shall be provided throughout the tile and work will conform to ANSI Specification A108.01-3.7; A108.02 – 4.4. and TCNA Details EJ171.

Setting materials used will conform to the ANSI 118.4 standard or greater and be recommended by the selected manufacturer for the installation & setting materials for ceramic or porcelain tile based on the application requirements.

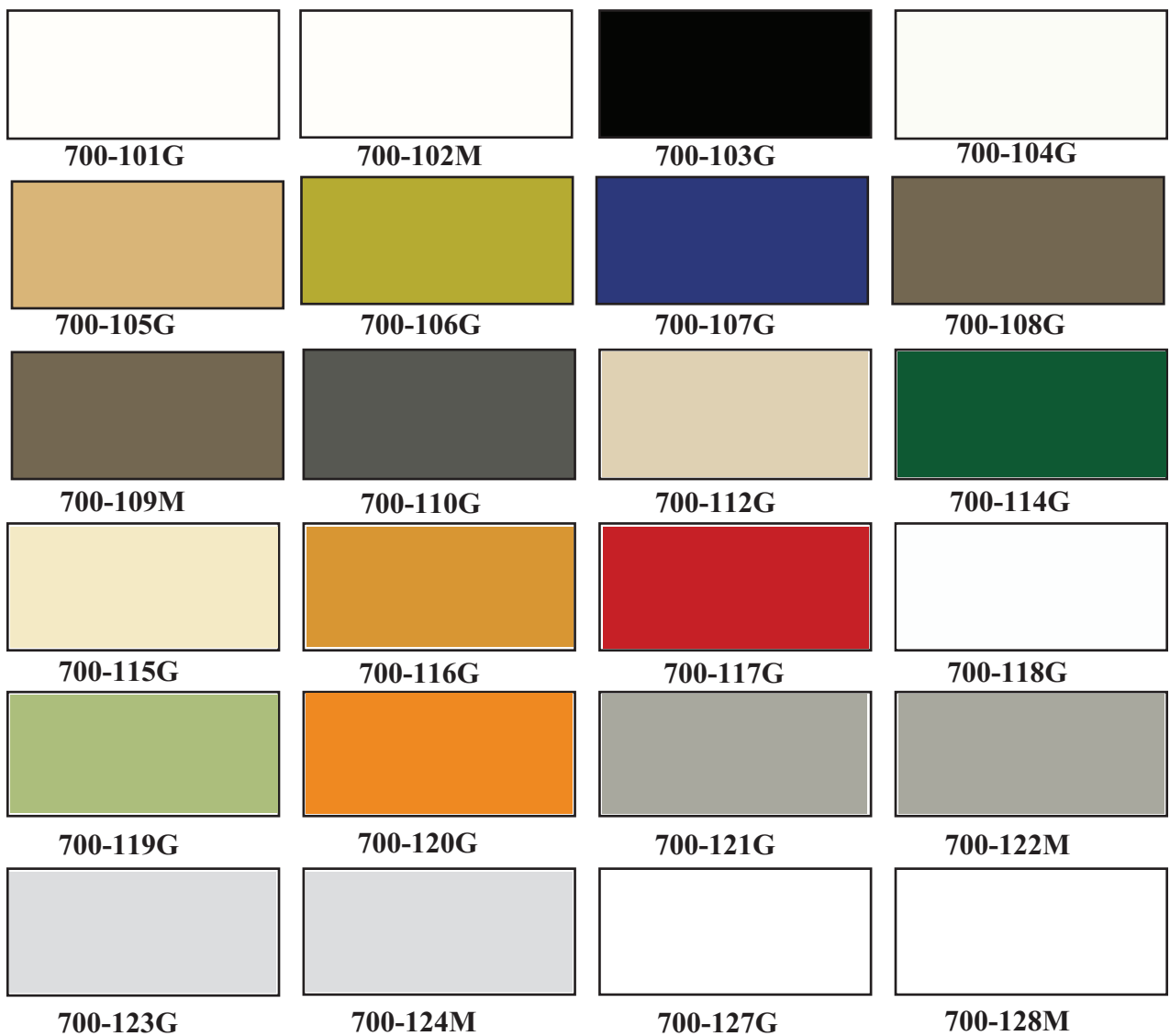


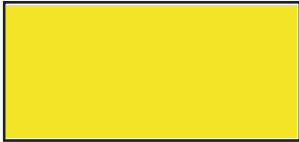


Subway

With a wide range of colors, Subway is a great option to color your walls.

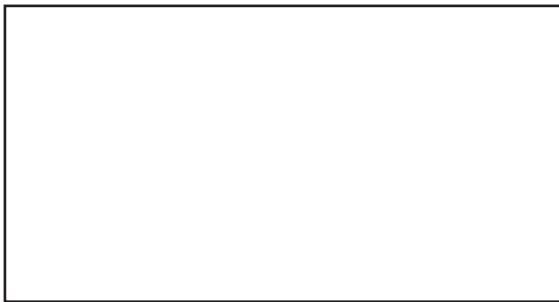
1. 11 sizes
2. 25 colors
3. Matte and Polished



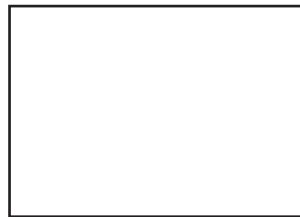


700-129G

Sizes



13x24



9.5x13



3x12



6x18



6x8



6x6



3x6



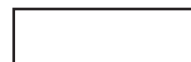
4 1/4x16



4 1/4x10



4 1/4x4 1/4



2x8



Technical Data

	2x8	4x4	4x10	4x16	3x6	6x6	6x8	6x18	3x12	9x13	13x24
700-127G	G	G	G BV,W	G	G,BV	G	G	G	G	G	G
700-101G	G	G	G	G	G,BV	G	G	G			
700-123G	G	G	G,BV	G,	G,BV	G	G	G	G		
700118G			G		G,BV						
700-104G			G		G,BV						
700-103G		G			G,BV						
700-112G		G	G		G	G		G			
700-121G		G	G	G	G	G					
700-108G		G	G		G	G		G			
700-110G		G			G						
700-115G		G			G	G					
700-105G		G			G	G					
700-102M	M	M	M	M	M,BV	M	M	M			
700-116G		G			G						
700-120G		G			G	G					
700-129G		G			G						
700-119G		G			G	G					
700-106G		G			G	G					
700-114G		G			G	G					
700-109M		M	M		M	M		M			
700-107G		G			G	G					
700-122M		M	M	M	M	M					
700-117G		G			G	G					
700-124M		M	M,BV	M	M,BV	M			M		
711-128M	M	M	M,BV	M	M,BV	M	M	M	M		

Key

M: Matte G: Glossy BV: Beveled



1. FINISHES:

Matte and Glossy

Type: Ceramic Wall Tile

Application: Indoor

Thickness: 7mm (2x8, 4x4, 6x6, 3x6 BV, 9.5x13) / 7.3 mm (3x12, 4x10, 4x10BV) / 8.0mm (4x16, 6x18,13x24)

Recycled Content: 28% *Pre-Consumer. Recommended Grout Joint: 3/32" or greater. All sizes modular with 3/16" grout joint

2. TECHNICAL DATA

Physical Properties	ASTM Test	ISO Test	Industry Standards	Mondani Results
Water Absorption	C373	ISO-10545/3	7.0% < wa <=20%	>10%
Breaking Strength	C648	ISO-10545/4	≥ 250 lbf	≥ 400 lbf
Scratch Hardness	MOH's Scale	EN-101	-	3
Chemical Resistance	C650	ISO-10545/13	Unaffected	Unaffected
Shade and Texture	CTDA "V"	-	-	V1
Warpage	C485	ISO-10545/2	0.0075	Pass
Wedging	C502	ISO-10545/2	1.0% Max	Pass

3. INSTALLATION

All installation work using Mondani Collection tiles will conform to the standards set forth in the latest version of ANSI A108/118 and/or the TCNA Handbook for Ceramic Tile installations.

Installation or setting materials:

Movement joints shall be provided throughout the tile and work will conform to ANSI Specification A108.01-3.7; A108.02 – 4.4. and TCNA Details EJ171.

Setting materials used will conform to the ANSI 118.4 standard or greater and be recommended by the selected manufacturer for the installation & setting materials for ceramic or porcelain tile based on the application requirements.



USA
MADE/STOCK



MONDANI COLLECTION

Floor and Wall Solutions

Order Samples at
331-702-2178
www.mondanicollection.com



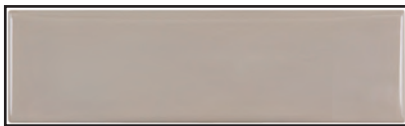
USA
MADE/STOCK



Seaport

Created to imitate the materials used in 19th Century English subways these neutral colors with subtle embossment are available in 2 finishes

1. All 6 colors come in a glossy finish
2. COLOR 500-502 and 500-504 also available in matte finish
3. 3x10



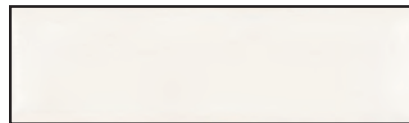
500-501



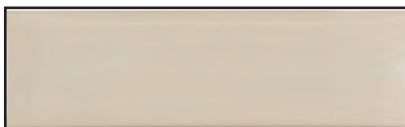
500-502



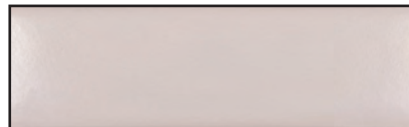
500-503



500-504

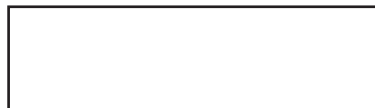


500-505



500-506

Sizes



3x10

1. FINISHES:

Glossy

Type: Ceramic Wall Tile

Application: Indoor

Thickness: 7.4 mm

Recommended Grout Joint: 1/8" or greater

2. TECHNICAL DATA

Physical Properties	ASTM Test	ISO Test	Industry Standards	Mondani Results
Water Absorption	C373	ISO-10545/3	7.0% < wa <=20%	>10%
Breaking Strength	C648	ISO-10545/4	> 250 lbf	> 400 lbf
Scratch Hardness	MOH's Scale	EN-101	-	3
Chemical Resistance	C650	ISO-10545/13	Unaffected	Unaffected
Shade and Texture	CTDA "V"	-	-	V1
Warpage	C485	ISO-10545/2	0.0075	Pass
Wedging	C502	ISO-10545/2	1.0% Max	Pass

3. INSTALLATION

All installation work using Mondani Collection tiles will conform to the standards set forth in the latest version of ANSI A108/118 and/or the TCNA Handbook for Ceramic Tile installations.

Installation or setting materials:

Movement joints shall be provided throughout the tile and work will conform to ANSI Specification A108.01-3.7; A108.02 – 4.4. and TCNA Details EJ171.

Setting materials used will conform to the ANSI 118.4 standard or greater and be recommended by the selected manufacturer for the installation & setting materials for ceramic or porcelain tile based on the application requirements.



USA
MADE/STOCK



MONDANI

COLLECTION

Floor and Wall Solutions

Order Samples at
331-702-2178
www.mondanicollection.com



Boqueria

Inspired by classic English brick that has weathered and painted over time. Boqueria is a unique product with a textured finish in 38 colors.

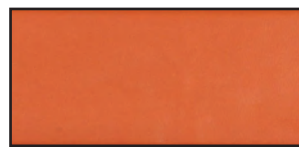
1. 38 Colors
2. Matte finish only
3. 3" x 9"



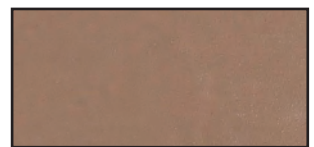
500-401



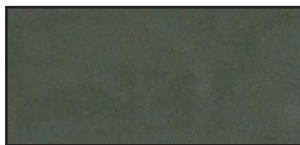
500-402



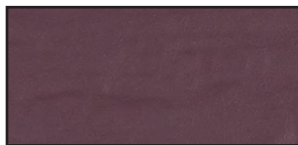
500-403



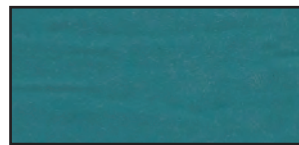
500-404



500-405



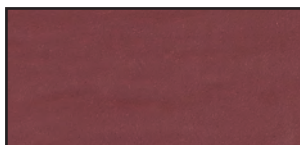
500-406



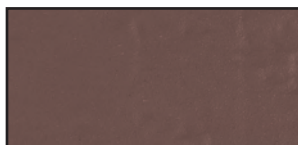
500-407



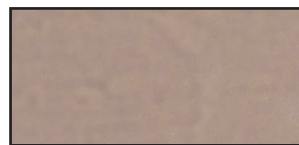
500-408



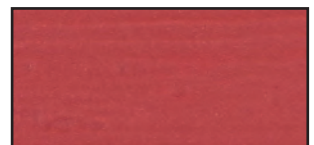
500-409



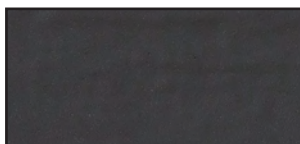
500-410



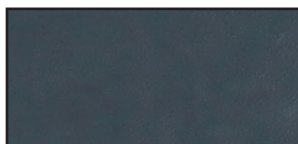
500-411



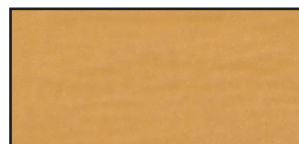
500-412



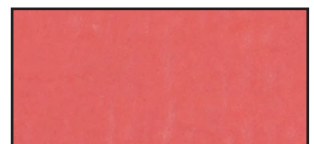
500-413



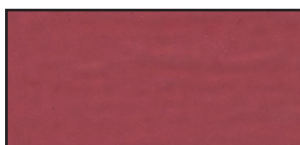
500-414



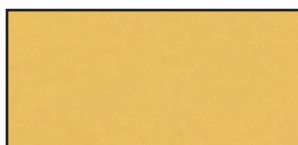
500-415



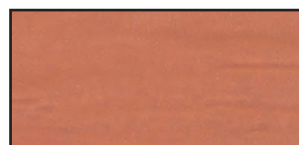
500-416



500-417



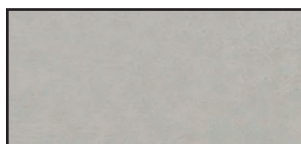
500-418



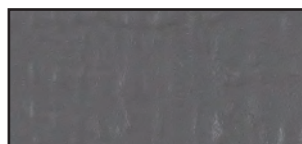
500-419



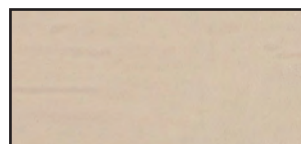
500-420



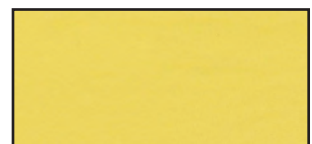
500-421



500-422



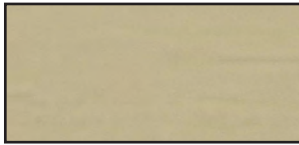
500-423



500-424

USA
MADE/STOCK





500-425



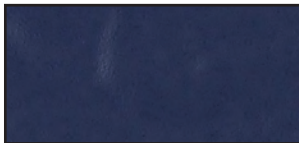
500-426



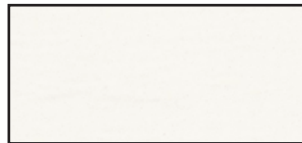
500-427



500-428



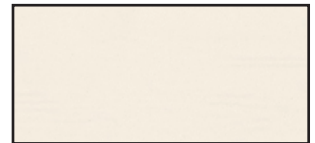
500-429



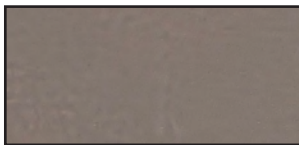
500-430



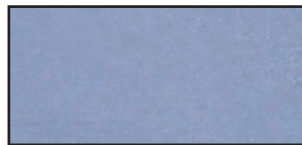
500-431



500-432



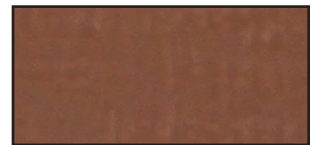
500-433



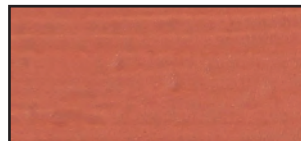
500-434



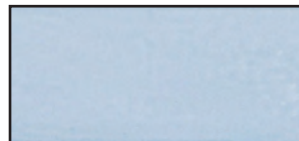
500-435



500-436

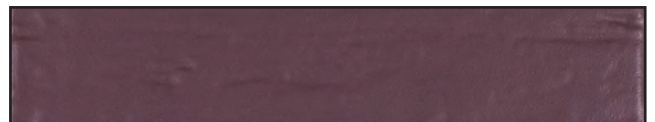
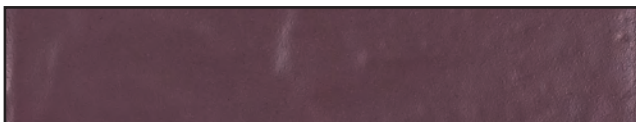
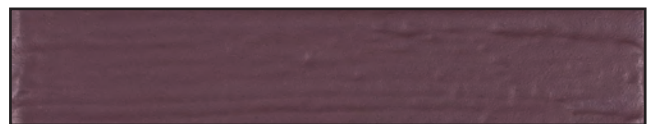
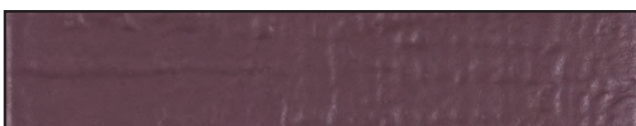


500-437



500-438

Mixture of Texture



Sizes



3x9



1. FINISHES:

Matte

Type: Ceramic Wall Tile

Application: Indoor

Thickness: 7.2 mm

2. TECHNICAL DATA

Physical Properties	ASTM Test	ISO Test	Industry Standards	Mondani Results
Water Absorption	C373	ISO-10545/3	7.0% < wa ≤ 20%	> 10%
Breaking Strength	C648	ISO-10545/4	> 250 lbf	> 400 lbf
Scratch Hardness	MOH's Scale	EN-101	-	3
Chemical Resistance	C650	ISO-10545/13	Unaffected	Unaffected
Shade and Texture	CTDA "V"	-	-	V1
Warpage	C485	ISO-10545/2	0.0075	Pass
Wedging	C502	ISO-10545/2	1.0% Max	Pass

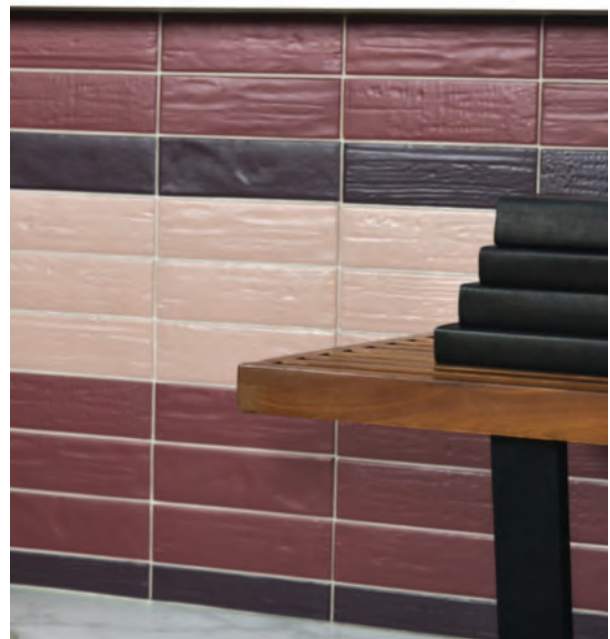
3. INSTALLATION

All installation work using Mondani Collection tiles will conform to the standards set forth in the latest version of ANSI A108/118 and/or the TCNA Handbook for Ceramic Tile installations.

Installation or setting materials:

Movement joints shall be provided throughout the tile and work will conform to ANSI Specification A108.01-3.7; A108.02 – 4.4. and TCNA Details EJ171.

Setting materials used will conform to the ANSI 118.4 standard or greater and be recommended by the selected manufacturer for the installation & setting materials for ceramic or porcelain tile based on the application requirements.





Lighthouse

Classic subway tile with great color palette and glossy finish. Fantastic complement to our Shore series.

1. 11 Colors
2. Glossy finish
3. 4" x 8"
4. Wall applications only



500-301



500-302



500-303



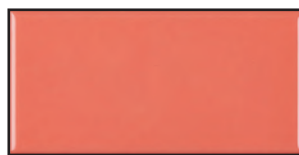
500-304



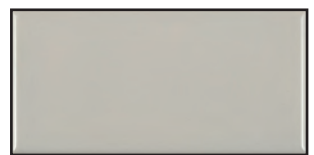
500-305



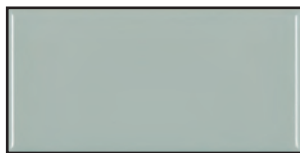
500-306



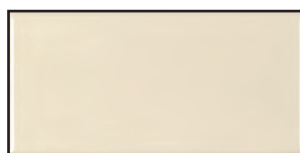
500-307



500-308



500-309

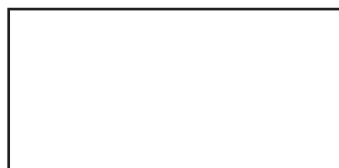


500-310



500-311

Sizes



4x8



1. FINISHES:

Glossy

Type: Ceramic Wall Tile

Application: Indoor

Thickness: 7.8 mm

Recommended Grout Joint: 1/8" or greater

2. TECHNICAL DATA

Physical Properties	ASTM Test	ISO Test	Industry Standards	Mondani Results
Water Absorption	C373	ISO-10545/3	7.0% < wa <=20%	>10%
Breaking Strength	C648	ISO-10545/4	≥ 250 lbf	≥ 400 lbf
Scratch Hardness	MOH's Scale	EN-101	-	3
Chemical Resistance	C650	ISO-10545/13	Unaffected	Unaffected
Shade and Texture	CTDA "V"	-	-	V1
Warpage	C485	ISO-10545/2	0.0075	Pass
Wedging	C502	ISO-10545/2	1.0% Max	Pass

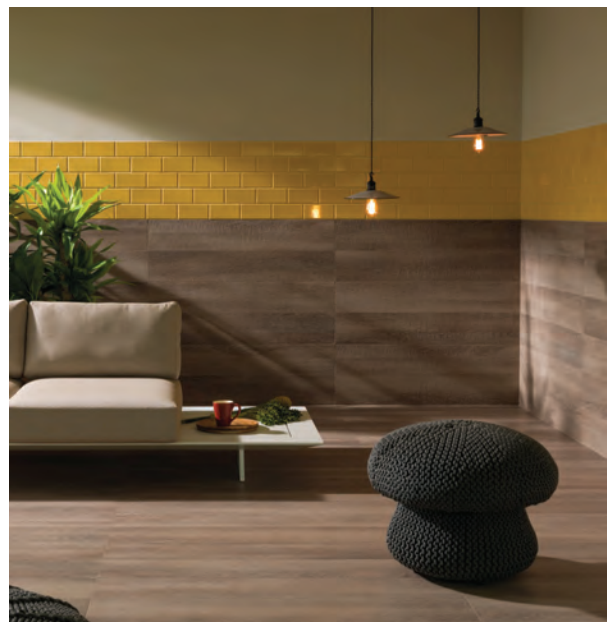
3. INSTALLATION

All installation work using Mondani Collection tiles will conform to the standards set forth in the latest version of ANSI A108/118 and/or the TCNA Handbook for Ceramic Tile installations.

Installation or setting materials:

Movement joints shall be provided throughout the tile and work will conform to ANSI Specification A108.01-3.7; A108.02 – 4.4. and TCNA Details EJ171.

Setting materials used will conform to the ANSI 118.4 standard or greater and be recommended by the selected manufacturer for the installation & setting materials for ceramic or porcelain tile based on the application requirements.



USA
MADE/STOCK



MONDANI

COLLECTION

Floor and Wall Solutions

Order Samples at
331-702-2178
www.mondanicollection.com



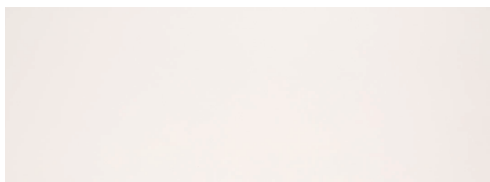
USA
MADE/STOCK



Shore

Subtle, soft shades in a large format wall tile comprise the Shore series. The 12" x 36" rectified tiles are a great choice for a stunning look on your walls

1. 7 Colors
2. Matte finish
3. 12" x 36"
4. Rectified



500-201



500-202



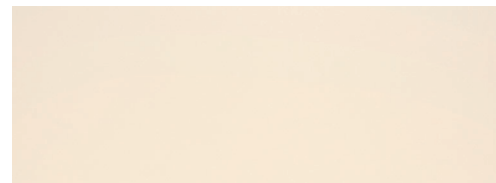
500-203



500-204



500-205



500-206



500-207

Sizes



12x36



1. FINISHES:

Matte

Type: Ceramic Wall Tile

Application: Indoor

Thickness: 12mm

Recommended Grout Joint: 1/8" or greater

2. TECHNICAL DATA

Physical Properties	ASTM Test	ISO Test	Industry Standards	Mondani Results
Water Absorption	C373	ISO-10545/3	7.0% < wa <= 20%	>10%
Breaking Strength	C648	ISO-10545/4	> 250 lbf	> 400 lbf
Scratch Hardness	MOH's Scale	EN-101	-	5
Chemical Resistance	C650	ISO-10545/13	Unaffected	Unaffected
Shade and Texture	CTDA "V"	-	-	V1
Warpage	C485	ISO-10545/2	0.0075	Pass
Wedging	C502	ISO-10545/2	1.0% Max	Pass

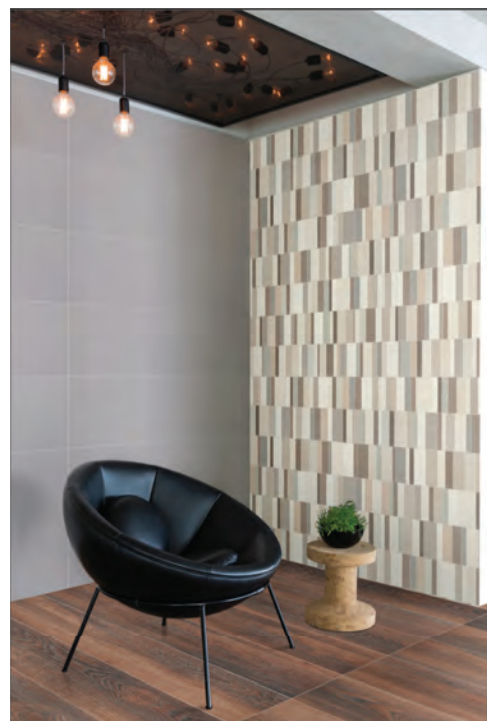
3. INSTALLATION

All installation work using Mondani Collection tiles will conform to the standards set forth in the latest version of ANSI A108/118 and/or the TCNA Handbook for Ceramic Tile installations.

Installation or setting materials:

Movement joints shall be provided throughout the tile and work will conform to ANSI Specification A108.01-3.7; A108.02 – 4.4. and TCNA Details EJ171.

Setting materials used will conform to the ANSI 118.4 standard or greater and be recommended by the selected manufacturer for the installation & setting materials for ceramic or porcelain tile based on the application requirements.





Tide

Flat and textured finishes in earth tone palettes allow for endless combinations. Tide is an elongated subway tile that creates a refined look.

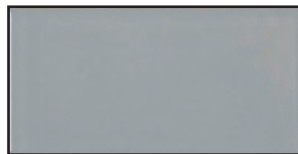
1. 8 colors, all available in glossy finish
2. 2 Sizes: 3x6 and 4x16
3. Available in two textures: Ripple and Smooth.
4. Ripple available in 4x16 only
5. 500-601 available in matte and glossy finish.



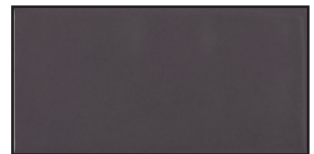
500-601



500-602



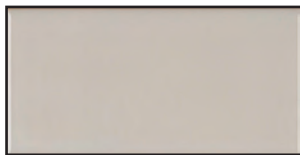
500-603



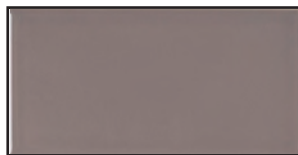
500-604



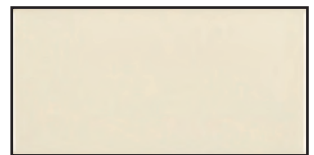
500-605



500-606



500-607



500-608



Ripple Glossy

Sizes



3x6



4x16





Floor and Wall Solutions

Order Samples at
331-702-2178
www.mondanicollection.com

1. FINISHES:

Matte and Glossy

Type: Ceramic Wall Tile

Application: Indoor

Thickness: 7.4

Recommended Grout Joint: 1/8" or greater

All sizes modular with 3/16" grout joint

2. TECHNICAL DATA

Physical Properties	ASTM Test	ISO Test	Industry Standards	Mondani Results
Water Absorption	C373	ISO-10545/3	7.0% < wa <= 20%	>10%
Breaking Strength	C648	ISO-10545/4	> 250 lbf	> 400 lbf
Scratch Hardness	MOH's Scale	EN-101	-	5
Chemical Resistance	C650	ISO-10545/13	Unaffected	Unaffected
Shade and Texture	CTDA "V"	-	-	V1
Warpage	C485	ISO-10545/2	0.0075	Pass
Wedging	C502	ISO-10545/2	1.0% Max	Pass

3. INSTALLATION

All installation work using Mondani Collection tiles will conform to the standards set forth in the latest version of ANSI A108/118 and/or the TCNA Handbook for Ceramic Tile installations.

Installation or setting materials:

Movement joints shall be provided throughout the tile and work will conform to ANSI Specification A108.01-3.7; A108.02 – 4.4. and TCNA Details EJ171.

Setting materials used will conform to the ANSI 118.4 standard or greater and be recommended by the selected manufacturer for the installation & setting materials for ceramic or porcelain tile based on the application requirements.



